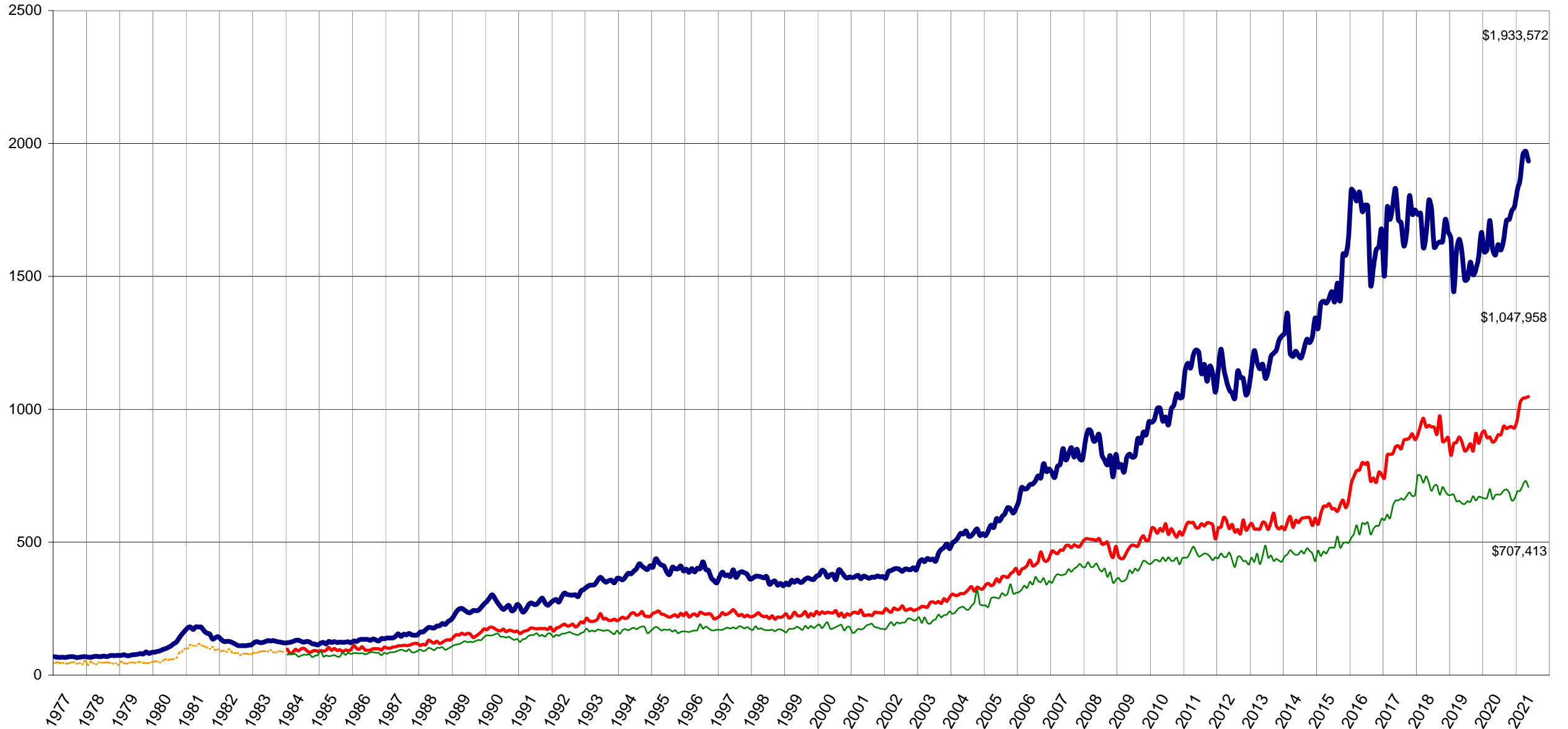


## Residential Average Sale Prices - January 1977 to May 2021



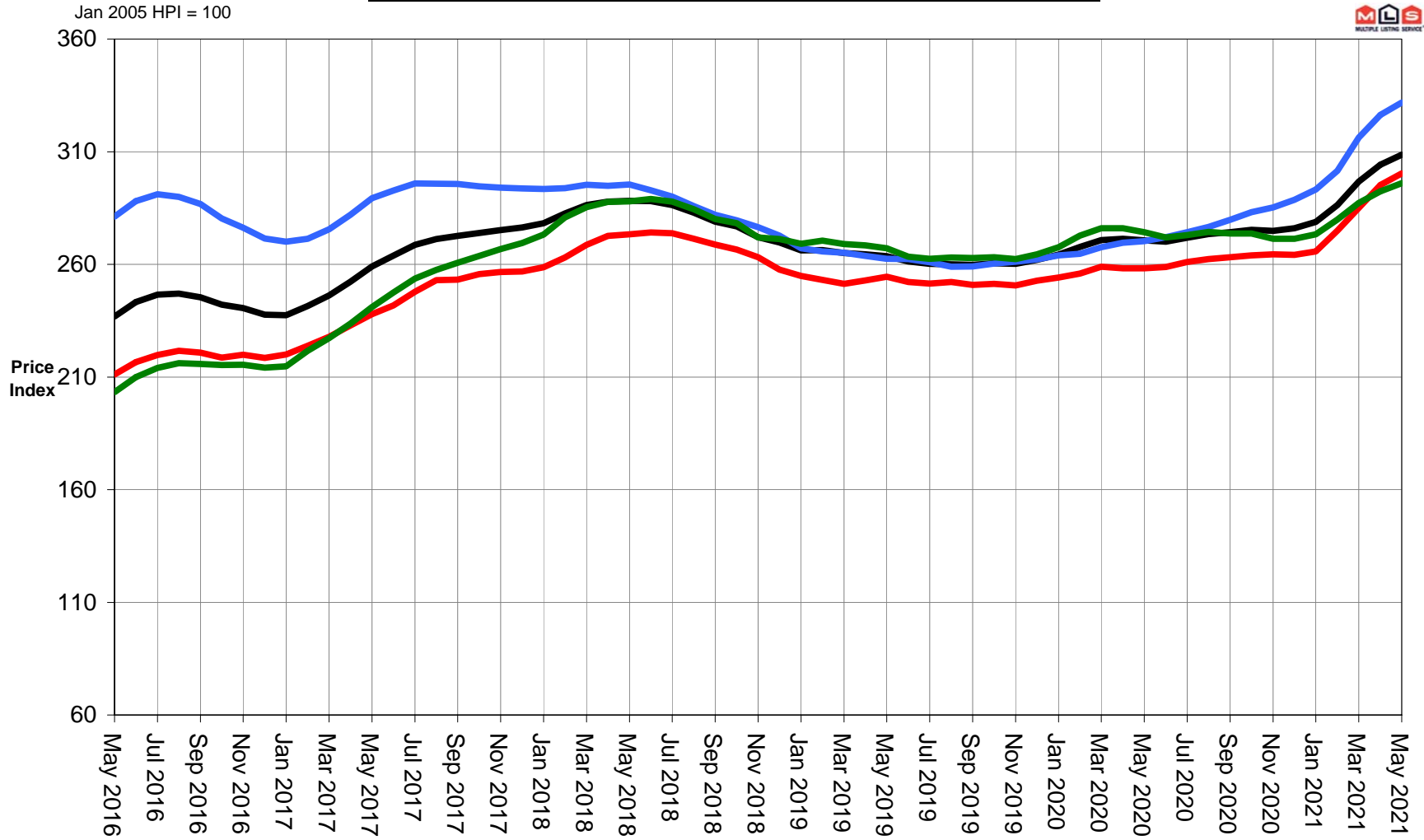
IN THOUSANDS (\$)



NOTE: From 1977 - 1984 condominium averages were not separated into attached & apartment.

## Greater Vancouver 5 Year Trend

Residential Detached Townhouse Apartment



Property Type	Area	Benchmark Price	Price Index	1 Month Change %	3 Month Change %	6 Month Change %	1 Year Change %	3 Year Change %	5 Year Change %	10 Year Change %
Residential / Composite	Lower Mainland	\$1,140,900	317.8	1.8%	9.2%	14.7%	17.4%	11.1%	40.9%	104.8%
	Greater Vancouver	\$1,172,800	308.7	1.5%	7.8%	12.3%	14.0%	7.1%	30.3%	92.0%
	Bowen Island	\$1,393,900	302.2	2.5%	14.5%	21.2%	45.8%	32.7%	93.0%	132.5%
	Burnaby East	\$1,071,500	305.5	1.5%	8.4%	7.8%	10.2%	3.2%	24.1%	90.3%
	Burnaby North	\$1,096,600	295.4	1.4%	5.8%	9.0%	9.9%	2.9%	26.9%	90.0%
	Burnaby South	\$1,045,200	296.7	1.4%	6.6%	8.1%	7.5%	-0.4%	27.3%	81.2%
	Coquitlam	\$1,088,000	323.4	1.6%	8.9%	13.9%	15.3%	10.1%	41.3%	117.2%
	Ladner	\$1,027,300	291.1	1.5%	8.7%	17.7%	22.3%	13.5%	20.2%	85.9%
	Maple Ridge	\$991,100	315.6	2.3%	13.7%	21.7%	25.8%	21.3%	71.2%	134.0%
	New Westminister	\$715,900	317.6	2.1%	7.0%	8.3%	10.3%	1.8%	45.8%	102.4%
	North Vancouver	\$1,223,900	281.2	1.5%	6.4%	11.0%	15.4%	7.9%	28.0%	91.6%
	Pitt Meadows	\$907,800	331.7	2.3%	10.6%	17.0%	19.1%	14.3%	72.4%	132.3%
	Port Coquitlam	\$923,700	316.2	1.1%	10.5%	17.1%	20.1%	13.3%	52.5%	118.2%
	Port Moody	\$1,046,900	294.4	0.8%	8.4%	12.3%	13.0%	7.0%	41.9%	113.3%
	Richmond	\$1,077,000	321.6	1.3%	6.8%	12.2%	14.7%	6.1%	26.0%	81.7%
	Squamish	\$1,011,600	313.6	2.3%	12.0%	18.7%	27.3%	24.0%	64.8%	135.1%
	Sunshine Coast	\$804,100	296.5	2.0%	12.6%	20.9%	39.0%	29.6%	80.8%	125.1%
	Tsawwassen	\$1,123,600	284.6	0.8%	5.1%	13.4%	17.0%	9.9%	9.2%	90.6%
	Vancouver East	\$1,209,800	359.5	1.2%	7.5%	9.8%	11.1%	5.3%	25.0%	102.4%
	Vancouver West	\$1,370,600	286.2	0.8%	5.7%	9.4%	6.8%	-1.2%	12.3%	69.0%
West Vancouver	\$2,539,400	279.6	2.4%	4.6%	12.2%	18.5%	0.8%	1.5%	73.1%	
Whistler	\$1,278,600	285.9	2.2%	10.6%	19.6%	29.7%	31.2%	78.9%	119.8%	
Single Family Detached	Lower Mainland	\$1,603,700	341.7	2.0%	11.8%	20.1%	27.6%	19.7%	33.1%	114.9%
	Greater Vancouver	\$1,800,600	331.8	1.7%	10.0%	16.3%	22.8%	12.3%	18.0%	93.6%
	Bowen Island	\$1,393,900	302.2	2.5%	14.5%	21.2%	45.8%	32.7%	93.0%	132.5%
	Burnaby East	\$1,469,500	328.6	2.4%	11.5%	14.4%	18.1%	11.8%	18.7%	105.6%
	Burnaby North	\$1,712,100	331.1	0.2%	8.9%	12.4%	16.3%	8.7%	8.9%	93.6%
	Burnaby South	\$1,765,100	337.9	2.1%	8.3%	12.2%	15.4%	5.6%	10.4%	85.4%
	Coquitlam	\$1,499,100	332.7	1.4%	10.0%	17.8%	23.4%	13.6%	26.2%	120.2%
	Ladner	\$1,292,700	309.4	1.7%	11.5%	22.4%	31.4%	24.3%	21.0%	101.8%
	Maple Ridge	\$1,121,500	319.5	2.1%	15.3%	24.9%	32.1%	28.1%	67.4%	140.2%
	New Westminister	\$1,310,400	326.9	1.8%	11.3%	15.0%	19.3%	11.3%	21.3%	95.5%
	North Vancouver	\$1,902,600	299.6	1.2%	6.7%	13.8%	23.2%	12.1%	17.6%	103.5%
	Pitt Meadows	\$1,189,900	335.3	2.0%	11.5%	20.1%	29.3%	25.2%	63.2%	139.2%
	Port Coquitlam	\$1,253,000	334.1	0.4%	10.3%	20.6%	29.3%	19.4%	37.6%	128.1%
	Port Moody	\$1,820,500	336.2	0.4%	9.9%	17.9%	25.3%	19.1%	34.9%	122.2%
	Richmond	\$1,931,300	370.3	2.3%	10.7%	17.1%	20.5%	7.1%	7.9%	73.4%
	Squamish	\$1,394,500	341.8	3.3%	17.5%	23.0%	33.3%	31.1%	71.2%	166.0%
	Sunshine Coast	\$838,300	293.7	2.0%	13.7%	21.8%	43.0%	32.8%	88.3%	127.5%
	Tsawwassen	\$1,359,500	296.8	1.1%	6.4%	16.8%	23.2%	16.2%	6.5%	101.4%
	Vancouver East	\$1,709,700	376.6	1.7%	9.2%	11.5%	18.1%	11.0%	13.5%	112.8%
	Vancouver West	\$3,383,100	342.2	0.6%	5.6%	8.4%	11.2%	-2.2%	-3.0%	59.3%
West Vancouver	\$3,139,800	296.4	3.9%	5.6%	14.5%	19.8%	4.0%	-0.2%	78.4%	
Whistler	\$2,512,100	317.1	4.0%	19.6%	25.5%	35.7%	41.9%	76.1%	153.1%	

**HOW TO READ THE TABLE:**

- Benchmark Price: Estimated sale price of a benchmark property. Benchmarks represent a typical property within each market.
- Price Index: Index numbers estimate the percentage change in price on typical and constant quality properties over time. All figures are based on past sales.
- x Month/Year Change %: Percentage change of index over a period of x month(s)/year(s)  
In January 2005, the indexes are set to 100.  
Townhome properties are similar to Attached properties, a category that was used in the previous MLSLink HPI, but do not include duplexes.  
The above info is deemed reliable, but is not guaranteed. All dollar amounts in CDN.

Property Type	Area	Benchmark Price	Price Index	1 Month Change %	3 Month Change %	6 Month Change %	1 Year Change %	3 Year Change %	5 Year Change %	10 Year Change %
Townhouse	Lower Mainland	\$825,200	297.4	2.2%	9.9%	15.1%	17.9%	11.9%	54.3%	101.9%
	Greater Vancouver	\$936,300	300.4	1.8%	9.2%	13.6%	16.3%	9.9%	42.3%	95.4%
	Burnaby East	\$693,200	311.0	1.7%	6.3%	2.9%	4.3%	1.2%	39.8%	92.8%
	Burnaby North	\$816,900	304.9	2.5%	6.2%	10.0%	13.6%	6.5%	36.6%	92.5%
	Burnaby South	\$747,000	312.4	1.2%	6.1%	6.4%	9.8%	1.8%	35.5%	93.6%
	Coquitlam	\$833,900	305.9	1.4%	9.6%	14.5%	14.2%	13.0%	46.7%	109.4%
	Ladner	\$756,300	279.9	0.6%	6.2%	14.4%	16.0%	0.8%	21.3%	66.8%
	Maple Ridge	\$678,300	314.9	2.1%	14.1%	21.4%	23.7%	16.8%	77.1%	130.7%
	New Westminister	\$834,900	318.9	3.7%	8.3%	12.6%	16.2%	8.5%	37.3%	96.4%
	North Vancouver	\$1,104,900	273.2	1.6%	6.8%	9.8%	12.8%	10.7%	30.3%	85.1%
	Pitt Meadows	\$741,900	321.0	3.4%	14.0%	19.4%	17.2%	15.6%	77.3%	120.3%
	Port Coquitlam	\$780,800	295.6	0.8%	11.9%	19.4%	20.7%	13.2%	55.4%	108.2%
	Port Moody	\$752,500	255.9	1.7%	11.0%	13.1%	12.4%	6.7%	36.6%	77.7%
	Richmond	\$911,600	299.6	1.5%	6.1%	10.1%	14.7%	7.4%	33.4%	81.9%
	Squamish	\$878,600	296.6	3.1%	12.1%	20.7%	30.2%	20.5%	63.5%	124.0%
	Tsawwassen	\$843,900	277.8	0.4%	5.6%	9.7%	10.2%	-8.4%	14.8%	63.1%
	Vancouver East	\$992,700	315.7	-0.9%	9.1%	10.2%	9.7%	4.0%	35.7%	94.8%
	Vancouver West	\$1,274,700	298.0	2.6%	9.2%	10.8%	13.3%	4.1%	25.5%	91.6%
Whistler	\$1,269,300	310.8	3.0%	11.5%	21.4%	33.0%	27.8%	85.0%	141.1%	
Apartment	Lower Mainland	\$726,700	306.9	1.5%	6.4%	9.8%	9.1%	3.6%	54.8%	99.0%
	Greater Vancouver	\$737,100	296.0	1.2%	5.8%	9.1%	7.9%	2.8%	45.6%	91.7%
	Burnaby East	\$712,300	283.5	1.1%	6.5%	4.6%	6.5%	-3.1%	35.0%	73.5%
	Burnaby North	\$714,500	279.9	1.7%	4.5%	7.6%	6.2%	-0.3%	48.0%	92.2%
	Burnaby South	\$682,600	279.7	1.3%	5.7%	6.7%	3.5%	-3.4%	41.2%	78.5%
	Coquitlam	\$588,000	322.7	2.0%	7.6%	10.7%	10.1%	6.7%	68.7%	119.5%
	Ladner	\$560,000	262.3	1.6%	5.1%	10.5%	9.2%	3.7%	28.1%	66.9%
	Maple Ridge	\$429,700	307.3	3.0%	8.9%	14.2%	13.8%	8.8%	86.5%	117.6%
	New Westminister	\$556,700	315.4	1.9%	5.8%	6.2%	7.8%	-1.1%	59.9%	106.4%
	North Vancouver	\$654,000	266.1	1.6%	5.8%	8.5%	10.1%	3.8%	47.3%	81.5%
	Pitt Meadows	\$548,200	336.6	1.9%	7.9%	13.1%	12.8%	5.4%	82.3%	133.6%
	Port Coquitlam	\$527,200	315.3	1.8%	9.6%	12.9%	13.7%	9.1%	77.5%	116.6%
	Port Moody	\$714,600	297.8	0.9%	6.4%	8.8%	8.2%	2.6%	60.6%	137.5%
	Richmond	\$714,800	306.0	0.8%	4.6%	9.8%	10.8%	6.2%	61.6%	98.3%
	Squamish	\$546,500	296.4	0.5%	5.3%	10.6%	17.3%	18.2%	61.6%	103.4%
	Tsawwassen	\$614,200	264.9	0.3%	2.4%	8.1%	7.4%	-0.2%	25.2%	72.0%
	Vancouver East	\$636,200	357.6	1.0%	6.1%	8.6%	6.9%	1.3%	44.8%	95.2%
	Vancouver West	\$836,100	271.3	0.8%	5.2%	9.4%	4.3%	-1.1%	23.8%	75.5%
West Vancouver	\$1,131,000	229.8	-2.5%	1.5%	3.6%	12.4%	-10.0%	30.3%	61.0%	
Whistler	\$576,100	247.6	0.7%	4.1%	14.4%	23.3%	25.9%	75.4%	80.3%	

**HOW TO READ THE TABLE:**

- Benchmark Price: Estimated sale price of a benchmark property. Benchmarks represent a typical property within each market.
- Price Index: Index numbers estimate the percentage change in price on typical and constant quality properties over time. All figures are based on past sales.
- x Month/Year Change %: Percentage change of index over a period of x month(s)/year(s)  
In January 2005, the indexes are set to 100.
- Townhome properties are similar to attached properties, a category that was used in the previous MLSLink HPI, but do not include duplexes.
- Lower Mainland includes areas serviced by both Real Estate Board of Greater Vancouver & Fraser Valley Real Estate Board.
- The above info is deemed reliable, but is not guaranteed. All dollar amounts in CDN.

# MLS® SALES Facts



**May  
2021**

		<i>Burnaby</i>	<i>Coquitlam</i>	<i>Delta - South</i>	<i>Islands - Gulf</i>	<i>Maple Ridge/Pitt Meadows</i>	<i>New Westminster</i>	<i>North Vancouver</i>	<i>Port Coquitlam</i>	<i>Port Moody/Belcarra</i>	<i>Richmond</i>	<i>Squamish</i>	<i>Sunshine Coast</i>	<i>Vancouver East</i>	<i>Vancouver West</i>	<i>West Vancouver/Howe Sound</i>	<i>Whistler/Pemberton</i>	<b>TOTALS</b>	
<b>May 2021</b>	<b>Number of Sales</b>	Detached	115	155	71	10	178	45	128	51	27	134	31	85	190	117	60	22	1,419
		Attached	110	65	31	0	86	18	58	39	27	120	29	12	59	106	8	32	800
		Apartment	296	130	42	0	73	129	171	72	46	248	30	18	222	513	21	38	2,049
	<b>Median Selling Price</b>	Detached	\$1,784,000	\$1,499,500	\$1,380,000	n/a	\$1,200,000	\$1,308,000	\$1,877,000	\$1,295,500	\$1,700,000	\$1,734,000	\$1,384,000	\$900,000	\$1,770,000	\$3,580,000	\$3,125,000	\$2,272,500	
		Attached	\$905,750	\$958,000	\$780,000	n/a	\$699,000	n/a	\$1,195,000	\$790,000	\$950,000	\$930,444	\$914,950	n/a	\$1,100,000	\$1,479,450	n/a	\$1,167,750	n/a
		Apartment	\$635,000	\$606,500	\$552,500	n/a	\$457,000	\$519,000	\$670,000	\$495,000	\$628,000	\$605,500	\$572,450	n/a	\$631,750	\$775,000	\$900,000	\$584,500	
<b>April 2021</b>	<b>Number of Sales</b>	Detached	160	126	73	10	204	38	183	74	30	178	32	80	221	139	80	27	1,655
		Attached	124	74	33	1	104	24	86	22	38	178	29	10	92	111	5	33	964
		Apartment	371	155	46	0	70	135	207	69	57	305	35	20	241	512	28	38	2,289
	<b>Median Selling Price</b>	Detached	\$1,776,500	\$1,654,000	\$1,338,000	n/a	\$1,181,000	\$1,344,000	\$1,935,000	\$1,250,000	\$1,837,750	\$1,744,000	\$1,512,600	\$914,987	\$1,850,000	\$3,300,000	\$3,300,000	\$2,075,000	
		Attached	\$907,500	\$984,000	\$880,000	n/a	\$690,000	\$838,000	\$1,219,450	\$820,500	\$835,000	\$968,000	\$925,000	n/a	\$1,255,000	\$1,408,000	n/a	\$1,159,000	n/a
		Apartment	\$636,000	\$600,000	\$565,000	n/a	\$458,000	\$535,500	\$699,000	\$501,900	\$650,000	\$603,000	\$565,000	\$489,500	\$630,000	\$815,000	\$880,000	\$777,500	
<b>May 2020</b>	<b>Number of Sales</b>	Detached	37	48	37	2	68	20	51	30	15	41	12	28	64	51	27	3	534
		Attached	34	35	11	0	37	3	30	9	14	48	6	2	25	36	3	5	298
		Apartment	89	49	7	0	27	49	55	21	17	63	4	1	76	177	12	6	653
	<b>Median Selling Price</b>	Detached	\$1,457,500	\$1,210,000	\$1,108,000	n/a	\$881,000	\$1,207,500	\$1,580,000	\$915,500	n/a	\$1,566,500	n/a	\$645,000	\$1,450,000	\$3,174,000	\$2,145,000	n/a	
		Attached	\$772,000	\$825,000	n/a	n/a	\$560,000	n/a	\$1,011,750	n/a	n/a	\$815,500	n/a	n/a	\$1,172,500	\$1,174,000	n/a	n/a	n/a
		Apartment	\$545,500	\$499,500	n/a	n/a	\$375,900	\$493,000	\$685,800	\$474,000	n/a	\$545,100	n/a	n/a	\$595,000	\$740,000	n/a	n/a	
<b>Jan. - May. 2021 Year-to-date</b>	<b>Number of Sales</b>	Detached	583	642	382	47	917	180	619	290	134	756	160	384	901	558	345	112	7,010
		Attached	512	337	130	3	444	102	358	149	131	661	119	63	384	424	44	140	4,001
		Apartment	1,550	716	202	0	366	614	814	299	228	1,235	133	72	1,061	2,378	105	216	9,989
	<b>Median Selling Price</b>	Detached	\$1,760,000	\$1,550,000	\$1,328,000	\$807,500	\$1,150,250	\$1,322,500	\$1,915,000	\$1,258,888	\$1,700,000	\$1,750,000	\$1,411,000	\$859,500	\$1,766,500	\$3,405,000	\$3,100,000	\$2,167,500	
		Attached	\$901,250	\$964,900	\$837,000	n/a	\$665,000	\$800,450	\$1,200,500	\$782,000	\$900,000	\$928,888	\$884,000	\$513,900	\$1,200,000	\$1,450,000	\$1,825,500	\$1,079,000	n/a
		Apartment	\$625,944	\$575,000	\$579,000	n/a	\$443,750	\$543,000	\$696,500	\$492,910	\$637,000	\$589,900	\$560,555	\$479,000	\$625,000	\$770,000	\$998,500	\$589,250	
<b>Jan. - May. 2020 Year-to-date</b>	<b>Number of Sales</b>	Detached	227	263	160	16	387	78	253	121	55	278	67	150	361	291	156	35	2,898
		Attached	201	174	58	2	226	42	125	85	58	280	45	19	157	190	15	54	1,731
		Apartment	573	328	73	0	150	269	360	135	87	529	41	18	462	1,085	39	61	4,210
	<b>Median Selling Price</b>	Detached	\$1,460,000	\$1,236,000	\$1,040,000	n/a	\$879,998	\$1,173,500	\$1,600,000	\$960,000	\$1,345,000	\$1,600,000	\$1,100,000	\$626,250	\$1,475,000	\$3,015,000	\$2,450,000	\$2,099,000	
		Attached	\$809,000	\$815,000	\$711,900	n/a	\$547,400	\$711,476	\$1,025,000	\$678,300	\$716,900	\$820,000	\$689,000	n/a	\$1,098,000	\$1,255,000	n/a	\$1,112,500	n/a
		Apartment	\$591,000	\$510,000	\$530,000	n/a	\$385,900	\$511,800	\$649,900	\$445,000	\$600,500	\$550,000	\$455,000	n/a	\$590,000	\$755,000	\$925,000	\$513,000	

Note: Median Selling Prices are not reported for areas with less than 20 sales or for the Gulf Islands



# MLS® LISTINGS Facts



**May  
2021**

		<i>Burnaby</i>	<i>Coquitlam</i>	<i>Delta - South</i>	<i>Islands - Gulf</i>	<i>Maple Ridge/Pitt Meadows</i>	<i>New Westminster</i>	<i>North Vancouver</i>	<i>Port Coquitlam</i>	<i>Port Moody/Belcarra</i>	<i>Richmond</i>	<i>Squamish</i>	<i>Sunshine Coast</i>	<i>Vancouver East</i>	<i>Vancouver West</i>	<i>West Vancouver/Howe Sound</i>	<i>Whistler/Pemberton</i>	<b>TOTALS</b>		
<b>May 2021</b>	<b>Number of Listings</b>	Detached	221	231	113	16	256	62	248	100	43	257	43	116	349	340	192	35	2,622	
		Attached	165	101	41	1	98	41	73	51	43	164	43	18	127	177	24	54	1,221	
		Apartment	464	236	37	1	86	167	271	95	63	408	27	16	370	960	43	38	3,282	
	<b>% Sales to Listings</b>	Detached	52%	67%	63%	63%	70%	73%	52%	51%	63%	52%	72%	73%	54%	34%	31%	63%		
		Attached	67%	64%	76%	0%	88%	44%	79%	76%	63%	73%	67%	67%	46%	60%	33%	59%		n/a
		Apartment	64%	55%	114%	0%	85%	77%	63%	76%	73%	61%	111%	113%	60%	53%	49%	100%		
<b>April 2021</b>	<b>Number of Listings</b>	Detached	337	278	130	12	284	72	263	117	52	361	50	121	481	350	223	34	3,165	
		Attached	183	116	36	0	120	31	112	44	50	208	41	9	136	189	21	28	1,324	
		Apartment	491	208	48	0	91	193	295	94	72	415	30	25	402	999	39	47	3,449	
	<b>% Sales to Listings</b>	Detached	47%	45%	56%	83%	72%	53%	70%	63%	58%	49%	64%	66%	46%	40%	36%	79%		
		Attached	68%	64%	92%	n/a	87%	77%	77%	50%	76%	86%	71%	111%	68%	59%	24%	118%		n/a
		Apartment	76%	75%	96%	n/a	77%	70%	70%	73%	79%	73%	117%	80%	60%	51%	72%	81%		
<b>May 2020</b>	<b>Number of Listings</b>	Detached	80	125	69	4	114	34	134	30	31	115	36	98	109	116	96	21	1,212	
		Attached	67	91	17	0	64	19	51	27	21	90	20	8	76	77	8	27	663	
		Apartment	181	149	49	0	62	102	152	31	41	203	21	7	200	546	34	31	1,809	
	<b>% Sales to Listings</b>	Detached	46%	38%	54%	50%	60%	59%	38%	100%	48%	36%	33%	29%	59%	44%	28%	14%		
		Attached	51%	38%	65%	n/a	58%	16%	59%	33%	67%	53%	30%	25%	33%	47%	38%	19%		n/a
		Apartment	49%	33%	14%	n/a	44%	48%	36%	68%	41%	31%	19%	14%	38%	32%	35%	19%		
<b>Jan. - May. 2021</b> <i>Year-to-date*</i>	<b>Number of Listings</b>	Detached	1,130	1,078	579	51	1,251	298	1,002	479	216	1,344	237	535	1,682	1,347	889	134	12,252	
		Attached	728	455	182	5	505	144	488	201	181	867	167	62	607	771	94	181	5,638	
		Apartment	2,141	968	237	1	426	881	1,223	455	285	1,857	150	85	1,631	4,216	197	235	14,988	
	<b>% Sales to Listings</b>	Detached	52%	60%	66%	92%	73%	60%	62%	61%	62%	56%	68%	72%	54%	41%	39%	84%		
		Attached	70%	74%	71%	60%	88%	71%	73%	74%	72%	76%	71%	102%	63%	55%	47%	77%		n/a
		Apartment	72%	74%	85%	0%	86%	70%	67%	66%	80%	67%	89%	85%	65%	56%	53%	92%		
<b>Jan. - May. 2020</b> <i>Year-to-date*</i>	<b>Number of Listings</b>	Detached	464	542	328	29	686	144	596	179	143	637	157	340	654	606	499	102	6,106	
		Attached	348	315	110	6	363	85	273	156	103	473	96	55	313	408	48	133	3,285	
		Apartment	1,137	704	180	2	302	497	767	221	166	1,079	113	38	917	2,456	159	178	8,916	
	<b>% Sales to Listings</b>	Detached	49%	49%	49%	55%	56%	54%	42%	68%	38%	44%	43%	44%	55%	48%	31%	34%		
		Attached	58%	55%	53%	33%	62%	49%	46%	54%	56%	59%	47%	35%	50%	47%	31%	41%		n/a
		Apartment	50%	47%	41%	0%	50%	54%	47%	61%	52%	49%	36%	47%	50%	44%	25%	34%		

\* Year-to-date listings represent a cumulative total of listings rather than total active listings.



# Listing & Sales Activity Summary

	<u>Listings</u>				<u>Sales</u>						
	1 May 2020	2 Apr 2021	3 May 2021	Col. 2 & 3 Percentage Variance	5 May 2020	6 Apr 2021	7 May 2021	Col. 6 & 7 Percentage Variance	9 Mar 2020 - May 2020	10 Mar 2021 - May 2021	Col. 9 & 10 Percentage Variance
<b>BURNABY</b>				<b>%</b>				<b>%</b>			<b>%</b>
DETACHED	80	337	221	-34.4	37	160	115	-28.1	132	430	225.8
ATTACHED	67	183	165	-9.8	34	124	110	-11.3	117	388	231.6
APARTMENTS	181	491	464	-5.5	89	371	296	-20.2	315	1083	243.8
<b>COQUITLAM</b>											
DETACHED	125	278	231	-16.9	48	126	155	23.0	155	461	197.4
ATTACHED	91	116	101	-12.9	35	74	65	-12.2	101	230	127.7
APARTMENTS	149	208	236	13.5	49	155	130	-16.1	170	472	177.6
<b>DELTA</b>											
DETACHED	69	130	113	-13.1	37	73	71	-2.7	100	253	153.0
ATTACHED	17	36	41	13.9	11	33	31	-6.1	32	97	203.1
APARTMENTS	49	48	37	-22.9	7	46	42	-8.7	35	156	345.7
<b>MAPLE RIDGE/PITT MEADOWS</b>											
DETACHED	114	284	256	-9.9	68	204	178	-12.7	222	653	194.1
ATTACHED	64	120	98	-18.3	37	104	86	-17.3	130	287	120.8
APARTMENTS	62	91	86	-5.5	27	70	73	4.3	80	244	205.0
<b>NORTH VANCOUVER</b>											
DETACHED	134	263	248	-5.7	51	183	128	-30.1	158	486	207.6
ATTACHED	51	112	73	-34.8	30	86	58	-32.6	77	231	200.0
APARTMENTS	152	295	271	-8.1	55	207	171	-17.4	199	581	192.0
<b>NEW WESTMINSTER</b>											
DETACHED	34	72	62	-13.9	20	38	45	18.4	51	129	152.9
ATTACHED	19	31	41	32.3	3	24	18	-25.0	31	67	116.1
APARTMENTS	102	193	167	-13.5	49	135	129	-4.4	168	437	160.1
<b>PORT MOODY/BELCARRA</b>											
DETACHED	31	52	43	-17.3	15	30	27	-10.0	37	98	164.9
ATTACHED	21	50	43	-14.0	14	38	27	-28.9	38	97	155.3
APARTMENTS	41	72	63	-12.5	17	57	46	-19.3	52	161	209.6
<b>PORT COQUITLAM</b>											
DETACHED	30	117	100	-14.5	30	74	51	-31.1	74	206	178.4
ATTACHED	27	44	51	15.9	9	22	39	77.3	52	106	103.8
APARTMENTS	31	94	95	1.1	21	69	72	4.3	72	218	202.8
<b>RICHMOND</b>											
DETACHED	115	361	257	-28.8	41	178	134	-24.7	174	546	213.8
ATTACHED	90	208	164	-21.2	48	178	120	-32.6	158	482	205.1
APARTMENTS	203	415	408	-1.7	63	305	248	-18.7	292	896	206.8
<b>SUNSHINE COAST</b>											
DETACHED	98	121	116	-4.1	28	80	85	6.3	98	271	176.5
ATTACHED	8	9	18	100.0	2	10	12	20.0	13	36	176.9
APARTMENTS	7	25	16	-36.0	1	20	18	-10.0	7	51	628.6
<b>SQUAMISH</b>											
DETACHED	36	50	43	-14.0	12	32	31	-3.1	40	109	172.5
ATTACHED	20	41	43	4.9	6	29	29	0.0	23	86	273.9
APARTMENTS	21	30	27	-10.0	4	35	30	-14.3	14	92	557.1
<b>VANCOUVER EAST</b>											
DETACHED	109	481	349	-27.4	64	221	190	-14.0	222	655	195.0
ATTACHED	76	136	127	-6.6	25	92	59	-35.9	89	251	182.0
APARTMENTS	200	402	370	-8.0	76	241	222	-7.9	266	779	192.9
<b>VANCOUVER WEST</b>											
DETACHED	116	350	340	-2.9	51	139	117	-15.8	194	402	107.2
ATTACHED	77	189	177	-6.3	36	111	106	-4.5	117	323	176.1
APARTMENTS	546	999	960	-3.9	177	512	513	0.2	614	1653	169.2
<b>WHISTLER/PEMBERTON</b>											
DETACHED	21	34	35	2.9	3	27	22	-18.5	18	72	300.0
ATTACHED	27	28	54	92.9	5	33	32	-3.0	21	98	366.7
APARTMENTS	31	47	38	-19.1	6	38	38	0.0	25	132	428.0
<b>WEST VANCOUVER/HOWE SOUND</b>											
DETACHED	96	223	192	-13.9	27	80	60	-25.0	90	238	164.4
ATTACHED	8	21	24	14.3	3	5	8	60.0	10	29	190.0
APARTMENTS	34	39	43	10.3	12	28	21	-25.0	26	80	207.7
<b>GRAND TOTALS</b>											
DETACHED	<b>1208</b>	<b>3153</b>	<b>2606</b>	<b>-17.3</b>	<b>532</b>	<b>1645</b>	<b>1409</b>	<b>-14.3</b>	<b>1765</b>	<b>5009</b>	<b>183.8</b>
ATTACHED	<b>663</b>	<b>1324</b>	<b>1220</b>	<b>-7.9</b>	<b>298</b>	<b>963</b>	<b>800</b>	<b>-16.9</b>	<b>1009</b>	<b>2808</b>	<b>178.3</b>
APARTMENTS	<b>1809</b>	<b>3449</b>	<b>3281</b>	<b>-4.9</b>	<b>653</b>	<b>2289</b>	<b>2049</b>	<b>-10.5</b>	<b>2335</b>	<b>7035</b>	<b>201.3</b>