

Property Type	Area	Benchmark Price	Price Index	1 Month Change %	3 Month Change %	6 Month Change %	1 Year Change %	3 Year Change %	5 Year Change %	10 Year Change %
Residential / Composite	Lower Mainland	\$1,183,600	329.7	1.5%	3.2%	5.6%	19.2%	19.8%	41.1%	111.8%
	Greater Vancouver	\$1,199,400	315.7	1.1%	2.0%	3.8%	14.7%	14.1%	30.4%	95.6%
	Bowen Island	\$1,449,700	314.3	1.7%	3.0%	6.6%	27.2%	49.7%	82.8%	142.9%
	Burnaby East	\$1,099,600	313.5	1.3%	2.3%	4.2%	10.8%	9.5%	27.0%	96.2%
	Burnaby North	\$1,122,900	302.5	0.8%	1.4%	3.8%	11.7%	9.3%	27.0%	91.5%
	Burnaby South	\$1,057,200	300.1	0.3%	1.3%	2.6%	9.2%	4.4%	23.3%	80.6%
	Coquitlam	\$1,122,700	333.7	1.6%	2.6%	4.8%	17.6%	18.8%	43.2%	124.7%
	Ladner	\$1,074,900	304.6	2.6%	5.1%	6.2%	23.3%	24.4%	29.9%	93.4%
	Maple Ridge	\$1,040,100	331.2	2.0%	4.3%	7.4%	29.3%	32.3%	67.0%	150.2%
	New Westminister	\$734,200	325.7	0.6%	1.8%	4.7%	10.8%	6.5%	43.9%	104.6%
	North Vancouver	\$1,245,600	286.2	0.5%	1.6%	3.3%	12.6%	16.4%	24.9%	97.0%
	Pitt Meadows	\$943,100	344.6	1.9%	3.6%	6.3%	22.9%	22.6%	61.9%	145.8%
	Port Coquitlam	\$949,700	325.1	1.7%	2.6%	4.0%	20.2%	23.9%	51.8%	126.2%
	Port Moody	\$1,070,000	300.9	0.4%	1.6%	3.0%	16.2%	13.3%	41.2%	122.6%
	Richmond	\$1,105,100	330.0	0.7%	2.4%	4.0%	14.7%	11.9%	26.7%	88.7%
	Squamish	\$1,081,600	335.3	5.5%	6.5%	9.4%	26.8%	34.7%	66.7%	170.2%
	Sunshine Coast	\$852,600	314.4	2.5%	5.9%	8.2%	31.1%	42.8%	77.6%	145.4%
	Tsawwassen	\$1,196,600	303.1	3.1%	4.4%	7.4%	20.7%	20.5%	24.7%	95.5%
	Vancouver East	\$1,216,600	361.5	0.6%	1.4%	1.8%	11.0%	11.2%	25.1%	100.4%
	Vancouver West	\$1,365,300	285.1	0.4%	-0.5%	0.5%	7.1%	3.1%	10.7%	65.5%
West Vancouver	\$2,576,600	283.7	0.8%	1.7%	3.9%	13.7%	12.0%	-0.9%	69.6%	
Whistler	\$1,377,500	308.0	5.3%	6.5%	10.1%	29.6%	40.3%	83.0%	168.5%	
Single Family Detached	Lower Mainland	\$1,669,400	355.7	1.8%	4.2%	6.2%	26.4%	30.7%	36.8%	120.1%
	Greater Vancouver	\$1,850,500	341.0	1.2%	2.7%	4.5%	20.5%	22.0%	21.6%	95.4%
	Bowen Island	\$1,449,700	314.3	1.7%	3.0%	6.6%	27.1%	49.7%	82.8%	142.9%
	Burnaby East	\$1,501,700	335.8	0.8%	4.9%	4.6%	17.2%	20.1%	27.1%	109.7%
	Burnaby North	\$1,743,700	337.2	-0.2%	-0.2%	2.0%	16.1%	17.2%	12.6%	93.2%
	Burnaby South	\$1,816,300	347.7	0.2%	2.4%	5.1%	16.1%	11.5%	9.6%	87.7%
	Coquitlam	\$1,538,700	341.5	1.5%	2.2%	4.1%	21.9%	22.9%	28.6%	123.3%
	Ladner	\$1,341,200	321.0	2.0%	6.2%	5.6%	28.7%	40.2%	32.3%	108.3%
	Maple Ridge	\$1,176,600	335.2	2.3%	4.1%	7.1%	33.1%	37.9%	64.6%	156.7%
	New Westminister	\$1,364,600	340.4	1.3%	4.9%	6.0%	21.1%	21.7%	32.2%	106.3%
	North Vancouver	\$1,939,500	305.4	1.4%	2.3%	3.1%	16.5%	23.4%	16.9%	106.5%
	Pitt Meadows	\$1,268,000	357.3	4.6%	6.2%	8.7%	30.1%	39.6%	60.0%	152.9%
	Port Coquitlam	\$1,289,000	343.7	1.9%	3.9%	3.2%	24.6%	32.1%	46.4%	136.4%
	Port Moody	\$1,878,400	346.9	1.0%	0.8%	3.6%	23.9%	26.1%	36.4%	134.4%
	Richmond	\$1,950,600	374.0	0.0%	2.1%	3.3%	17.2%	15.0%	10.4%	80.1%
	Squamish	\$1,436,100	352.0	5.1%	5.6%	6.4%	26.8%	43.7%	69.3%	174.8%
	Sunshine Coast	\$882,900	309.3	1.7%	5.9%	7.4%	31.4%	47.7%	82.5%	138.7%
	Tsawwassen	\$1,460,700	318.9	3.6%	6.2%	8.7%	26.3%	29.5%	28.0%	106.8%
	Vancouver East	\$1,717,400	378.3	0.6%	1.5%	2.1%	13.9%	16.9%	19.4%	106.4%
	Vancouver West	\$3,450,400	349.0	-1.3%	-0.5%	2.6%	10.7%	4.7%	-2.3%	51.4%
West Vancouver	\$3,201,200	302.2	1.9%	2.5%	5.9%	16.7%	16.1%	-2.2%	76.7%	
Whistler	\$2,626,200	331.5	6.2%	6.6%	8.7%	32.0%	54.9%	80.2%	166.1%	

**HOW TO READ THE TABLE:**

- Benchmark Price: Estimated sale price of a benchmark property. Benchmarks represent a typical property within each market.
- Price Index: Index numbers estimate the percentage change in price on typical and constant quality properties over time. All figures are based on past sales.
- x Month/Year Change %: Percentage change of index over a period of x month(s)/year(s)  
In January 2005, the indexes are set to 100.  
Townhome properties are similar to Attached properties, a category that was used in the previous MLSLink HPI, but do not include duplexes.  
The above info is deemed reliable, but is not guaranteed. All dollar amounts in CDN.

Property Type	Area	Benchmark Price	Price Index	1 Month Change %	3 Month Change %	6 Month Change %	1 Year Change %	3 Year Change %	5 Year Change %	10 Year Change %
Townhouse	Lower Mainland	\$873,200	314.7	1.5%	3.7%	8.2%	22.0%	22.0%	52.0%	112.6%
	Greater Vancouver	\$975,000	312.8	1.2%	2.7%	6.0%	18.5%	17.3%	43.1%	102.2%
	Burnaby East	\$693,200	311.0	1.0%	-1.0%	1.7%	2.6%	2.2%	36.6%	94.9%
	Burnaby North	\$841,500	314.1	1.0%	1.3%	5.5%	12.7%	10.6%	40.6%	93.8%
	Burnaby South	\$763,700	319.4	1.7%	1.0%	3.5%	8.8%	7.7%	34.4%	91.0%
	Coquitlam	\$878,100	322.1	1.7%	3.6%	6.8%	20.9%	23.7%	55.4%	121.8%
	Ladner	\$799,000	295.7	3.2%	5.9%	6.3%	20.3%	8.2%	33.0%	77.9%
	Maple Ridge	\$712,300	330.7	1.3%	3.5%	7.2%	28.6%	28.8%	70.0%	147.2%
	New Westminister	\$864,300	330.1	1.9%	3.6%	7.3%	16.7%	13.8%	48.9%	105.4%
	North Vancouver	\$1,175,300	290.6	1.9%	4.4%	8.0%	16.7%	21.2%	38.5%	98.2%
	Pitt Meadows	\$751,300	325.1	-1.0%	-0.2%	4.7%	21.4%	13.5%	58.4%	137.1%
	Port Coquitlam	\$812,800	307.7	-0.2%	2.2%	4.9%	22.7%	25.7%	47.0%	115.6%
	Port Moody	\$761,900	259.1	-0.3%	0.1%	3.0%	14.8%	9.2%	42.9%	86.8%
	Richmond	\$961,200	315.9	1.1%	3.1%	7.0%	16.6%	12.4%	35.1%	87.7%
	Squamish	\$903,400	305.0	2.6%	1.6%	6.0%	25.6%	22.5%	57.8%	153.1%
	Sunshine Coast	\$617,700	295.9	2.2%	1.0%	5.8%	30.2%	27.1%	53.9%	144.3%
	Tsawwassen	\$879,500	289.5	2.7%	5.0%	4.6%	14.3%	-3.9%	20.8%	71.6%
	Vancouver East	\$1,053,700	335.1	0.6%	5.9%	5.1%	16.8%	20.2%	36.6%	101.4%
Vancouver West	\$1,300,300	304.0	0.6%	0.7%	4.6%	12.3%	12.0%	22.7%	88.6%	
Whistler	\$1,308,100	320.3	1.7%	1.1%	6.1%	27.5%	28.7%	78.3%	180.2%	
Apartment	Lower Mainland	\$744,200	314.3	1.3%	2.1%	3.9%	11.9%	9.9%	48.3%	107.0%
	Greater Vancouver	\$746,400	299.7	1.0%	1.3%	2.5%	9.5%	7.7%	39.2%	96.9%
	Burnaby East	\$740,100	294.6	1.5%	1.6%	5.0%	9.4%	5.4%	32.0%	83.4%
	Burnaby North	\$733,200	287.2	1.1%	2.3%	4.4%	9.8%	6.1%	40.5%	95.8%
	Burnaby South	\$683,600	280.1	0.1%	0.9%	1.4%	6.3%	0.8%	32.7%	77.8%
	Coquitlam	\$603,200	331.0	1.6%	2.4%	4.6%	12.9%	14.0%	63.1%	131.1%
	Ladner	\$591,600	277.1	3.0%	1.4%	7.3%	14.1%	9.5%	26.1%	73.4%
	Maple Ridge	\$451,100	322.6	2.3%	5.9%	8.1%	21.2%	22.1%	77.3%	132.4%
	New Westminister	\$568,000	321.8	0.2%	0.8%	4.0%	7.8%	2.6%	48.8%	105.1%
	North Vancouver	\$654,300	266.2	-0.9%	-0.1%	1.6%	7.6%	8.9%	34.6%	87.7%
	Pitt Meadows	\$565,500	347.2	1.7%	4.0%	5.1%	18.1%	16.0%	68.5%	144.3%
	Port Coquitlam	\$537,800	321.6	2.6%	1.7%	3.8%	15.3%	17.4%	64.2%	125.8%
	Port Moody	\$732,800	305.4	0.4%	2.9%	3.5%	13.1%	10.8%	53.0%	145.1%
	Richmond	\$731,100	313.0	0.9%	2.3%	3.1%	11.8%	10.0%	51.4%	107.7%
	Squamish	\$633,700	343.7	7.9%	12.2%	16.5%	27.0%	34.2%	72.5%	191.0%
	Sunshine Coast	\$574,300	347.6	7.7%	10.1%	14.0%	27.6%	28.0%	61.3%	184.9%
	Tsawwassen	\$648,800	279.8	2.2%	0.9%	5.9%	12.4%	6.8%	23.4%	78.4%
	Vancouver East	\$633,400	356.0	0.6%	0.2%	0.6%	7.7%	5.3%	32.9%	96.7%
Vancouver West	\$823,200	267.1	0.8%	-0.7%	-0.8%	5.0%	1.7%	19.8%	75.7%	
West Vancouver	\$1,124,100	228.4	-3.3%	-1.6%	-3.1%	2.7%	-2.7%	19.3%	53.8%	
Whistler	\$662,200	284.6	8.3%	11.8%	15.8%	31.7%	41.9%	89.1%	166.2%	

**HOW TO READ THE TABLE:**

- Benchmark Price: Estimated sale price of a benchmark property. Benchmarks represent a typical property within each market.
- Price Index: Index numbers estimate the percentage change in price on typical and constant quality properties over time. All figures are based on past sales.
- x Month/Year Change %: Percentage change of index over a period of x month(s)/year(s)

In January 2005, the indexes are set to 100.

Townhome properties are similar to attached properties, a category that was used in the previous MLSLink HPI, but do not include duplexes.

Lower Mainland includes areas serviced by both Real Estate Board of Greater Vancouver & Fraser Valley Real Estate Board.

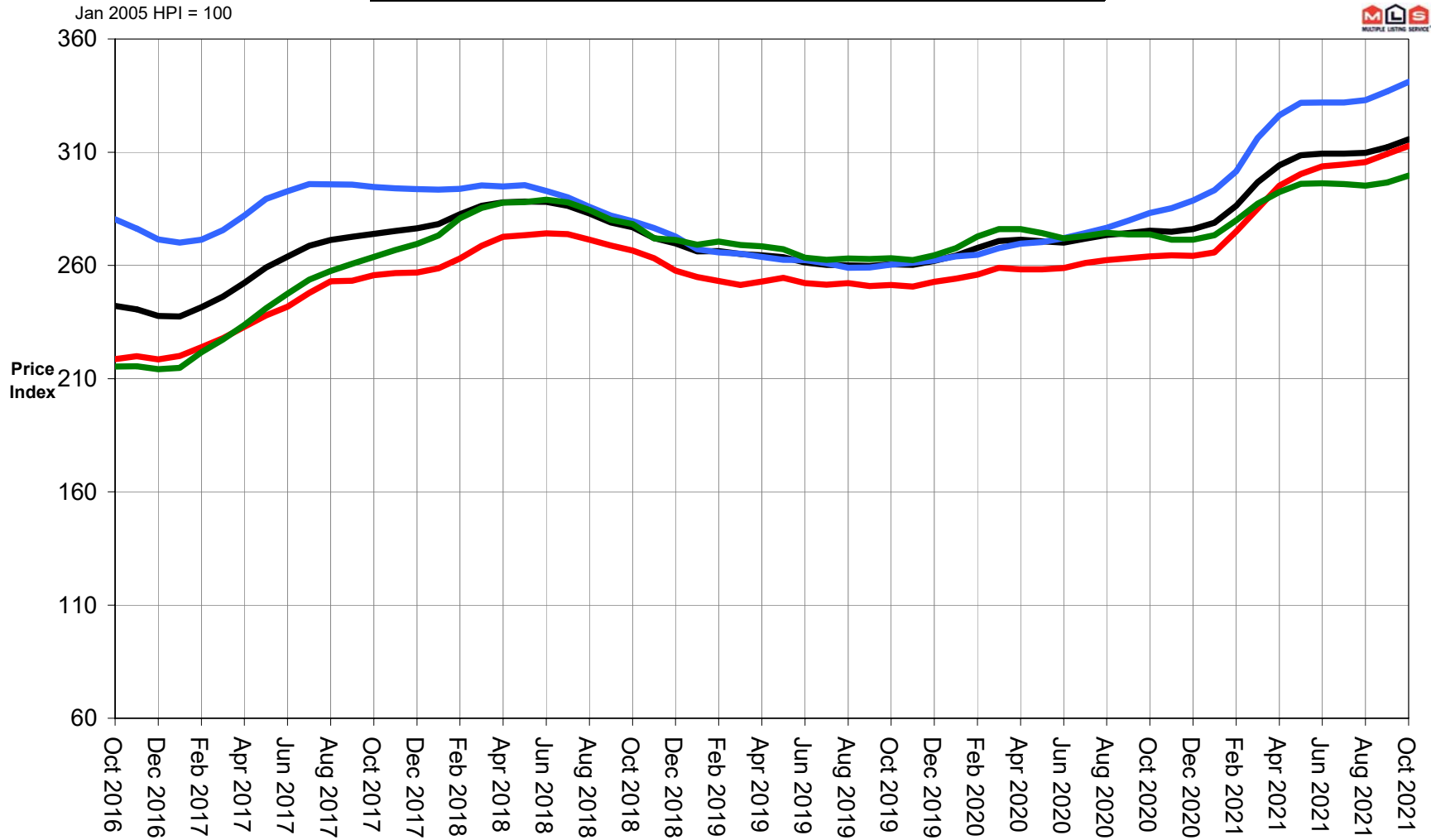
The above info is deemed reliable, but is not guaranteed. All dollar amounts in CDN.

# Listing & Sales Activity Summary

	<u>Listings</u>				<u>Sales</u>						
	1 Oct 2020	2 Sep 2021	3 Oct 2021	Col. 2 & 3 Percentage Variance	5 Oct 2020	6 Sep 2021	7 Oct 2021	Col. 6 & 7 Percentage Variance	9 Aug 2020 - Oct 2020	10 Aug 2021 - Oct 2021	Col. 9 & 10 Percentage Variance
<b>BURNABY</b>				<b>%</b>				<b>%</b>			<b>%</b>
DETACHED	164	130	104	-20.0	98	75	97	29.3	297	244	-17.8
ATTACHED	98	95	70	-26.3	82	85	73	-14.1	227	240	5.7
APARTMENTS	380	384	270	-29.7	214	248	291	17.3	632	792	25.3
<b>COQUITLAM</b>											
DETACHED	140	127	82	-35.4	129	74	100	35.1	341	273	-19.9
ATTACHED	83	50	29	-42.0	89	37	39	5.4	211	124	-41.2
APARTMENTS	223	176	165	-6.3	129	133	163	22.6	344	436	26.7
<b>DELTA</b>											
DETACHED	75	59	59	0.0	88	49	51	4.1	217	163	-24.9
ATTACHED	28	30	24	-20.0	18	23	27	17.4	60	70	16.7
APARTMENTS	32	28	22	-21.4	25	22	24	9.1	77	73	-5.2
<b>MAPLE RIDGE/PITT MEADOWS</b>											
DETACHED	173	143	119	-16.8	170	109	122	11.9	476	348	-26.9
ATTACHED	76	42	40	-4.8	87	51	38	-25.5	244	140	-42.6
APARTMENTS	80	82	41	-50.0	57	60	58	-3.3	146	157	7.5
<b>NORTH VANCOUVER</b>											
DETACHED	147	144	94	-34.7	128	80	94	17.5	364	246	-32.4
ATTACHED	67	46	54	17.4	62	35	30	-14.3	164	107	-34.8
APARTMENTS	228	224	142	-36.6	142	115	136	18.3	374	350	-6.4
<b>NEW WESTMINSTER</b>											
DETACHED	50	40	18	-55.0	36	14	29	107.1	99	64	-35.4
ATTACHED	37	24	28	16.7	21	11	17	54.5	85	51	-40.0
APARTMENTS	181	171	124	-27.5	111	104	118	13.5	316	325	2.8
<b>PORT MOODY/BELCARRA</b>											
DETACHED	36	30	18	-40.0	25	24	21	-12.5	70	63	-10.0
ATTACHED	26	19	12	-36.8	31	14	19	35.7	92	41	-55.4
APARTMENTS	60	43	38	-11.6	36	31	32	3.2	103	94	-8.7
<b>PORT COQUITLAM</b>											
DETACHED	40	34	42	23.5	36	38	37	-2.6	121	111	-8.3
ATTACHED	35	40	23	-42.5	38	21	31	47.6	91	75	-17.6
APARTMENTS	98	69	66	-4.3	46	37	50	35.1	123	127	3.3
<b>RICHMOND</b>											
DETACHED	180	184	141	-23.4	107	106	116	9.4	318	339	6.6
ATTACHED	132	107	117	9.3	95	96	117	21.9	286	319	11.5
APARTMENTS	307	328	278	-15.2	178	230	243	5.7	520	694	33.5
<b>SUNSHINE COAST</b>											
DETACHED	75	66	58	-12.1	104	70	63	-10.0	301	200	-33.6
ATTACHED	19	12	10	-16.7	20	6	10	66.7	58	27	-53.4
APARTMENTS	18	11	6	-45.5	14	9	10	11.1	38	33	-13.2
<b>SQUAMISH</b>											
DETACHED	39	31	28	-9.7	38	20	24	20.0	94	63	-33.0
ATTACHED	34	23	18	-21.7	32	20	20	0.0	83	57	-31.3
APARTMENTS	21	25	28	12.0	21	11	25	127.3	54	46	-14.8
<b>VANCOUVER EAST</b>											
DETACHED	234	185	158	-14.6	151	138	137	-0.7	440	377	-14.3
ATTACHED	119	141	87	-38.3	66	75	76	1.3	196	191	-2.6
APARTMENTS	332	296	233	-21.3	174	153	178	16.3	526	486	-7.6
<b>VANCOUVER WEST</b>											
DETACHED	196	220	158	-28.2	111	82	108	31.7	306	265	-13.4
ATTACHED	133	116	124	6.9	70	66	68	3.0	181	213	17.7
APARTMENTS	850	892	689	-22.8	365	416	417	0.2	1084	1276	17.7
<b>WHISTLER/PEMBERTON</b>											
DETACHED	30	25	13	-48.0	32	24	19	-20.8	90	63	-30.0
ATTACHED	38	29	15	-48.3	63	27	29	7.4	131	76	-42.0
APARTMENTS	42	28	34	21.4	36	30	36	20.0	106	102	-3.8
<b>WEST VANCOUVER/HOWE SOUND</b>											
DETACHED	142	162	126	-22.2	74	41	60	46.3	187	144	-23.0
ATTACHED	23	11	14	27.3	7	10	9	-10.0	22	24	9.1
APARTMENTS	39	32	22	-31.3	22	20	19	-5.0	55	58	5.5
<b>GRAND TOTALS</b>											
DETACHED	<b>1721</b>	<b>1580</b>	<b>1218</b>	<b>-22.9</b>	<b>1327</b>	<b>944</b>	<b>1078</b>	<b>14.2</b>	<b>3721</b>	<b>2963</b>	<b>-20.4</b>
ATTACHED	<b>948</b>	<b>785</b>	<b>665</b>	<b>-15.3</b>	<b>781</b>	<b>577</b>	<b>603</b>	<b>4.5</b>	<b>2131</b>	<b>1755</b>	<b>-17.6</b>
APARTMENTS	<b>2891</b>	<b>2789</b>	<b>2158</b>	<b>-22.6</b>	<b>1570</b>	<b>1619</b>	<b>1800</b>	<b>11.2</b>	<b>4498</b>	<b>5049</b>	<b>12.2</b>

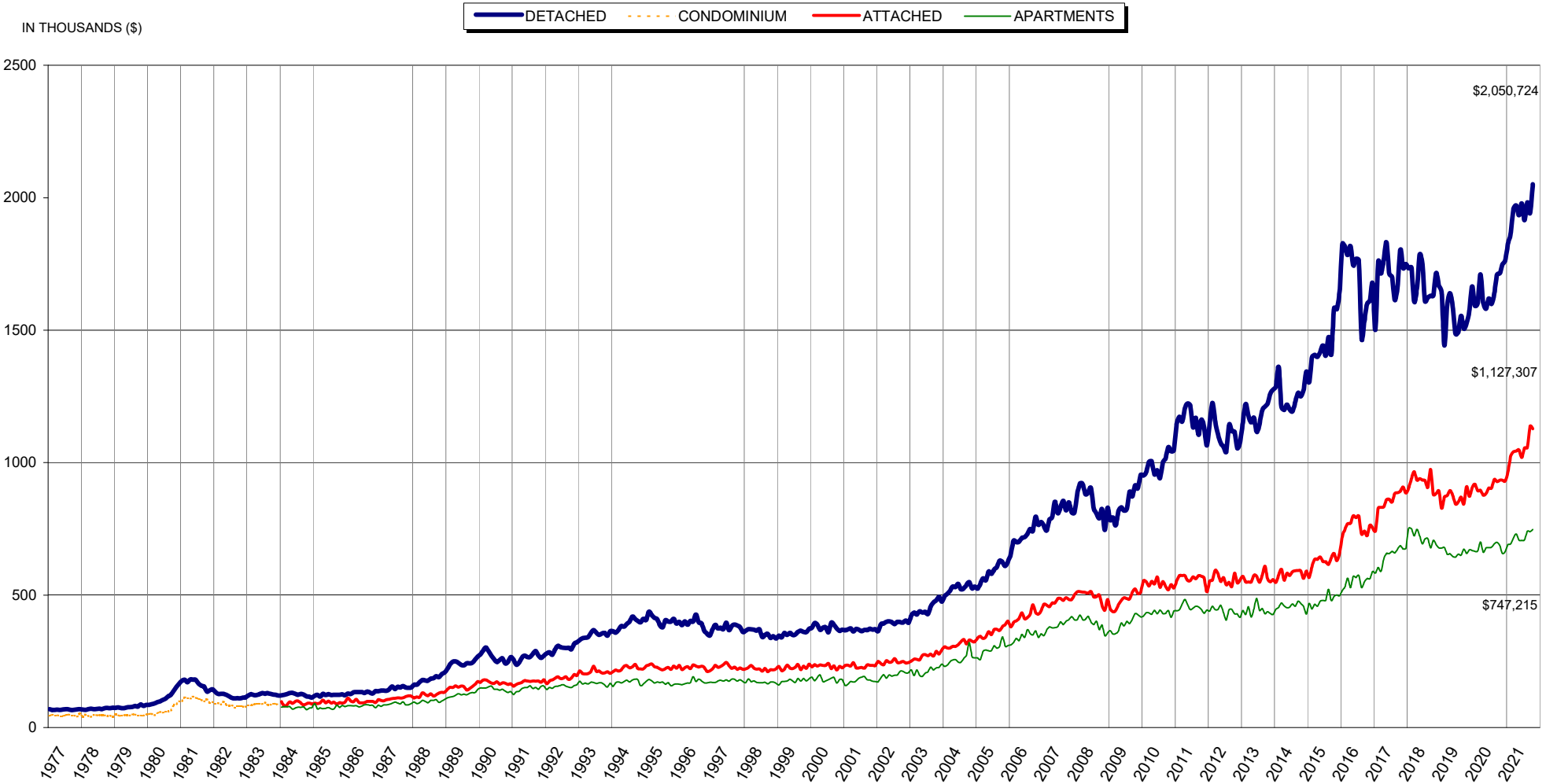
# Greater Vancouver 5 Year Trend

Residential Detached Townhouse Apartment





## Residential Average Sale Prices - January 1977 to October 2021



NOTE: From 1977 - 1984 condominium averages were not separated into attached & apartment.



# MLS<sup>®</sup> SALES Facts



**October  
2021**

		<i>Burnaby</i>	<i>Coquitlam</i>	<i>Delta - South</i>	<i>Islands - Gulf</i>	<i>Maple Ridge/Pitt Meadows</i>	<i>New Westminster</i>	<i>North Vancouver</i>	<i>Port Coquitlam</i>	<i>Port Moody/Belcarra</i>	<i>Richmond</i>	<i>Squamish</i>	<i>Sunshine Coast</i>	<i>Vancouver East</i>	<i>Vancouver West</i>	<i>West Vancouver/Howe Sound</i>	<i>Whistler/Pemberton</i>	<b>TOTALS</b>
<b>October 2021</b>	<b>Number of Sales</b>	Detached 97	100	51	12	122	29	94	37	21	116	24	63	137	108	60	19	1,090
		Attached 73	39	27	0	38	17	30	31	19	117	20	10	76	68	9	29	603
		Apartment 291	163	24	1	58	118	136	50	32	243	25	10	178	417	19	36	1,801
	<b>Median Selling Price</b>	Detached \$1,772,000	\$1,631,500	\$1,452,000	n/a	\$1,280,000	\$1,400,000	\$2,187,500	\$1,380,500	\$1,700,000	\$1,810,000	\$1,539,950	\$877,000	\$1,850,500	\$3,205,000	\$2,625,000	n/a	
		Attached \$920,000	\$1,005,000	\$849,900	n/a	\$727,550	n/a	\$1,355,028	\$850,000	n/a	\$960,088	\$960,000	n/a	\$1,315,900	\$1,489,950	n/a	\$1,235,000	n/a
		Apartment \$660,000	\$608,000	\$561,250	n/a	\$480,000	\$560,500	\$702,500	\$543,900	\$685,000	\$619,900	\$635,000	n/a	\$662,000	\$830,000	n/a	\$627,500	
<b>September 2021</b>	<b>Number of Sales</b>	Detached 75	74	49	6	109	14	80	38	24	106	20	70	138	82	41	24	950
		Attached 85	37	23	1	51	11	35	21	14	96	20	6	75	66	10	27	578
		Apartment 248	133	22	2	60	104	115	37	31	230	11	9	153	416	20	30	1,621
	<b>Median Selling Price</b>	Detached \$1,650,000	\$1,570,000	\$1,390,000	n/a	\$1,222,500	n/a	\$2,147,500	\$1,240,000	\$1,698,660	\$1,760,000	\$1,352,500	\$922,500	\$1,742,500	\$3,140,000	\$2,953,000	\$3,084,603	
		Attached \$978,000	\$988,800	\$897,000	n/a	\$720,000	n/a	\$1,329,900	\$840,000	n/a	\$1,031,500	\$925,500	n/a	\$1,247,000	\$1,435,000	n/a	\$1,420,000	n/a
		Apartment \$660,000	\$599,000	\$565,000	n/a	\$466,000	\$565,000	\$745,000	\$502,000	\$653,000	\$625,000	n/a	n/a	\$640,000	\$791,500	\$1,167,500	\$626,000	
<b>October 2020</b>	<b>Number of Sales</b>	Detached 98	129	88	8	170	36	128	36	25	107	38	104	151	111	74	32	1,335
		Attached 82	89	18	1	87	21	62	38	31	95	32	20	66	70	7	63	782
		Apartment 214	129	25	0	57	111	142	46	36	178	21	14	174	365	22	36	1,570
	<b>Median Selling Price</b>	Detached \$1,600,000	\$1,358,800	\$1,210,250	n/a	\$961,000	\$1,216,000	\$1,757,500	\$1,050,000	\$1,315,000	\$1,580,000	\$1,059,676	\$722,000	\$1,590,000	\$3,000,000	\$2,891,500	\$2,200,000	
		Attached \$887,500	\$850,000	n/a	n/a	\$575,000	\$739,900	\$1,093,500	\$706,000	\$843,500	\$866,000	\$719,950	\$439,750	\$1,165,000	\$1,332,500	n/a	\$1,200,000	n/a
		Apartment \$581,750	\$518,000	\$543,000	n/a	\$400,000	\$519,750	\$674,000	\$468,000	\$605,000	\$535,000	\$493,000	n/a	\$590,000	\$760,000	\$1,265,000	\$445,250	
<b>Jan. - Oct. 2021</b> <i>Year-to-date</i>	<b>Number of Sales</b>	Detached 1,027	1,143	658	88	1,540	302	1,057	493	246	1,343	256	722	1,577	1,031	603	221	12,307
		Attached 941	563	243	6	707	192	569	279	250	1,195	218	107	706	768	83	267	7,094
		Apartment 2,866	1,442	334	6	632	1,158	1,436	520	379	2,366	213	118	1,926	4,499	203	384	18,482
	<b>Median Selling Price</b>	Detached \$1,765,500	\$1,544,000	\$1,350,000	\$845,000	\$1,175,000	\$1,351,000	\$1,950,500	\$1,259,950	\$1,700,000	\$1,770,000	\$1,413,500	\$878,500	\$1,760,000	\$3,314,000	\$3,000,000	\$2,362,000	
		Attached \$910,000	\$960,000	\$831,000	n/a	\$679,900	\$837,250	\$1,235,500	\$820,000	\$914,000	\$943,800	\$887,750	\$525,000	\$1,216,500	\$1,450,000	\$1,925,000	\$1,162,000	n/a
		Apartment \$639,900	\$587,000	\$570,000	n/a	\$450,000	\$550,000	\$699,000	\$500,000	\$651,000	\$603,250	\$580,000	\$487,500	\$630,000	\$780,000	\$1,050,000	\$595,250	
<b>Jan. - Oct. 2020</b> <i>Year-to-date</i>	<b>Number of Sales</b>	Detached 657	796	494	57	1,117	220	802	311	176	765	203	627	1,047	750	440	170	8,632
		Attached 499	493	156	4	625	159	379	242	190	727	171	95	442	477	43	240	4,942
		Apartment 1,506	873	190	0	388	769	963	333	251	1,346	132	68	1,274	2,788	120	212	11,213
	<b>Median Selling Price</b>	Detached \$1,515,000	\$1,285,194	\$1,124,000	\$570,000	\$913,420	\$1,200,000	\$1,692,500	\$985,000	\$1,362,250	\$1,550,000	\$1,101,500	\$689,000	\$1,550,000	\$3,050,000	\$2,525,000	\$1,892,500	
		Attached \$810,500	\$834,950	\$718,000	n/a	\$555,000	\$729,900	\$1,055,000	\$695,000	\$798,000	\$848,000	\$704,900	\$472,500	\$1,140,000	\$1,300,000	\$1,535,000	\$1,175,000	n/a
		Apartment \$586,500	\$516,400	\$511,250	n/a	\$394,900	\$514,000	\$645,000	\$455,000	\$605,000	\$548,000	\$468,500	\$400,000	\$610,000	\$755,000	\$1,032,500	\$459,450	

Note: Median Selling Prices are not reported for areas with less than 20 sales or for the Gulf Islands



# MLS® LISTINGS Facts



**October  
2021**

		<i>Burnaby</i>	<i>Coquitlam</i>	<i>Delta - South</i>	<i>Islands - Gulf</i>	<i>Maple Ridge/Pitt Meadows</i>	<i>New Westminster</i>	<i>North Vancouver</i>	<i>Port Coquitlam</i>	<i>Port Moody/Belcarra</i>	<i>Richmond</i>	<i>Squamish</i>	<i>Sunshine Coast</i>	<i>Vancouver East</i>	<i>Vancouver West</i>	<i>West Vancouver/Howe Sound</i>	<i>Whistler/Pemberton</i>	<b>TOTALS</b>		
<b>October 2021</b>	<b>Number of Listings</b>	Detached	104	82	59	8	119	18	94	42	18	141	28	58	158	158	126	13	1,226	
		Attached	70	29	24	0	40	28	54	23	12	117	18	10	87	124	14	15	665	
		Apartment	270	165	22	0	41	124	142	66	38	278	28	6	233	689	22	34	2,158	
	<b>% Sales to Listings</b>	Detached	93%	122%	86%	150%	103%	161%	100%	88%	117%	82%	86%	109%	87%	68%	48%	146%		
		Attached	104%	134%	113%	n/a	95%	61%	56%	135%	158%	100%	111%	100%	87%	55%	64%	193%		n/a
		Apartment	108%	99%	109%	n/a	141%	95%	96%	76%	84%	87%	89%	167%	76%	61%	86%	106%		
<b>September 2021</b>	<b>Number of Listings</b>	Detached	130	127	59	17	143	40	144	34	30	184	31	66	185	220	162	25	1,597	
		Attached	95	50	30	0	42	24	46	40	19	107	23	12	141	116	11	29	785	
		Apartment	384	176	28	0	82	171	224	69	43	328	25	11	296	892	32	28	2,789	
	<b>% Sales to Listings</b>	Detached	58%	58%	83%	35%	76%	35%	56%	112%	80%	58%	65%	106%	75%	37%	25%	96%		
		Attached	89%	74%	77%	n/a	121%	46%	76%	53%	74%	90%	87%	50%	53%	57%	91%	93%		n/a
		Apartment	65%	76%	79%	n/a	73%	61%	51%	54%	72%	70%	44%	82%	52%	47%	63%	107%		
<b>October 2020</b>	<b>Number of Listings</b>	Detached	164	140	75	11	173	50	147	40	36	180	39	75	234	196	142	30	1,732	
		Attached	98	83	28	0	76	37	67	35	26	132	34	19	119	133	23	38	948	
		Apartment	380	223	32	0	80	181	228	98	60	307	21	18	332	850	39	42	2,891	
	<b>% Sales to Listings</b>	Detached	60%	92%	117%	73%	98%	72%	87%	90%	69%	59%	97%	139%	65%	57%	52%	107%		
		Attached	84%	107%	64%	n/a	114%	57%	93%	109%	119%	72%	94%	105%	55%	53%	30%	166%		n/a
		Apartment	56%	58%	78%	n/a	71%	61%	62%	47%	60%	58%	100%	78%	52%	43%	56%	86%		
<b>Jan. - Oct. 2021</b> <i>Year-to-date*</i>	<b>Number of Listings</b>	Detached	1,743	1,634	885	105	1,960	447	1,582	699	355	2,229	368	922	2,560	2,356	1,551	248	19,644	
		Attached	1,239	708	314	6	776	265	765	342	310	1,461	261	119	1,113	1,337	156	293	9,465	
		Apartment	3,931	1,878	368	5	756	1,633	2,064	751	481	3,386	237	150	2,934	7,932	327	414	27,247	
	<b>% Sales to Listings</b>	Detached	59%	70%	74%	84%	79%	68%	67%	71%	69%	60%	70%	78%	62%	44%	39%	89%		
		Attached	76%	80%	77%	100%	91%	72%	74%	82%	81%	82%	84%	90%	63%	57%	53%	91%		n/a
		Apartment	73%	77%	91%	120%	84%	71%	70%	69%	79%	70%	90%	79%	66%	57%	62%	93%		
<b>Jan. - Oct. 2020</b> <i>Year-to-date*</i>	<b>Number of Listings</b>	Detached	1,274	1,305	822	91	1,630	395	1,443	432	346	1,598	371	871	1,894	1,618	1,187	286	15,563	
		Attached	927	776	269	9	823	280	688	373	282	1,191	247	144	933	1,073	138	334	8,487	
		Apartment	3,179	1,708	383	7	705	1,444	2,037	615	470	2,619	240	105	2,629	6,854	390	393	23,778	
	<b>% Sales to Listings</b>	Detached	52%	61%	60%	63%	69%	56%	56%	72%	51%	48%	55%	72%	55%	46%	37%	59%		
		Attached	54%	64%	58%	44%	76%	57%	55%	65%	67%	61%	69%	66%	47%	44%	31%	72%		n/a
		Apartment	47%	51%	50%	0%	55%	53%	47%	54%	53%	51%	55%	65%	48%	41%	31%	54%		

\* Year-to-date listings represent a cumulative total of listings rather than total active listings.

