

Property Type	Area	Benchmark Price	Price Index	1 Month Change %	3 Month Change %	6 Month Change %	1 Year Change %	3 Year Change %	5 Year Change %	10 Year Change %
Residential / Composite	Lower Mainland	\$1,101,300	336.2	-0.1%	-0.9%	-3.1%	-0.1%	-0.5%	34.9%	76.6%
	Greater Vancouver	\$1,171,500	333.2	-0.1%	-0.7%	-2.9%	0.5%	2.1%	30.0%	66.9%
	Bowen Island	\$1,428,300	298.9	-4.0%	0.7%	-6.3%	9.2%	-1.5%	52.3%	140.5%
	Burnaby East	\$1,131,000	359.6	0.6%	-0.7%	-3.1%	0.6%	5.9%	32.5%	88.6%
	Burnaby North	\$986,700	328.8	-0.2%	-1.1%	-3.5%	-1.0%	1.5%	25.9%	78.4%
	Burnaby South	\$1,122,500	347.8	0.2%	1.9%	-2.2%	0.0%	3.6%	24.9%	77.4%
	Coquitlam	\$1,074,900	337.7	0.7%	-1.2%	-3.5%	-1.7%	-1.0%	33.1%	94.0%
	Ladner	\$1,148,200	334.1	-0.4%	-2.3%	-0.7%	2.5%	5.5%	46.2%	106.2%
	Maple Ridge	\$974,200	338.9	0.4%	-0.2%	-1.8%	1.8%	-3.4%	49.6%	142.4%
	New Westminister	\$820,900	375.7	1.1%	-1.9%	-0.5%	1.4%	8.2%	38.0%	103.0%
	North Vancouver	\$1,320,600	307.5	-0.5%	-0.9%	-5.5%	-2.1%	0.3%	26.4%	70.7%
	Pitt Meadows	\$934,800	373.3	-1.3%	1.4%	-0.4%	5.7%	2.5%	54.8%	166.6%
	Port Coquitlam	\$941,700	366.1	0.4%	0.1%	-2.1%	1.4%	5.4%	47.9%	132.7%
	Port Moody	\$1,108,000	353.7	0.2%	-3.3%	-3.1%	-0.6%	4.3%	44.5%	112.2%
	Richmond	\$1,144,500	376.9	0.1%	-1.4%	-2.6%	-0.3%	5.7%	33.7%	77.8%
	Squamish	\$1,066,500	354.3	-1.8%	-2.2%	-3.0%	-1.4%	2.5%	32.9%	135.9%
	Sunshine Coast	\$832,400	304.9	-3.8%	0.0%	-4.0%	6.1%	1.2%	50.0%	144.1%
	Tsawwassen	\$1,205,000	313.2	-0.3%	-1.0%	-2.1%	0.0%	1.6%	34.1%	83.2%
	Vancouver East	\$1,207,100	376.6	-0.1%	0.1%	-2.1%	1.5%	5.3%	31.4%	81.4%
	Vancouver West	\$1,309,800	310.7	-0.3%	-0.7%	-3.1%	1.4%	0.6%	16.1%	33.0%
West Vancouver	\$2,564,300	276.7	2.4%	0.5%	-2.9%	1.8%	-6.6%	18.9%	36.4%	
Whistler	\$1,296,700	287.2	-2.8%	-3.9%	-6.6%	-7.9%	-7.6%	25.7%	130.1%	
Single Family Detached	Lower Mainland	\$1,781,100	390.9	0.0%	-1.2%	-2.9%	2.2%	2.1%	45.4%	94.7%
	Greater Vancouver	\$1,997,000	371.7	0.0%	-1.2%	-3.1%	2.0%	4.3%	38.3%	74.5%
	Bowen Island	\$1,429,700	298.4	-4.0%	0.6%	-6.3%	9.2%	-1.6%	52.2%	140.6%
	Burnaby East	\$1,957,700	420.6	0.3%	-1.2%	-0.3%	8.3%	11.0%	49.5%	116.9%
	Burnaby North	\$2,133,100	408.0	1.1%	0.0%	-1.9%	4.2%	13.4%	46.6%	105.6%
	Burnaby South	\$2,233,000	426.2	-1.6%	3.6%	-1.4%	8.0%	11.2%	42.7%	100.6%
	Coquitlam	\$1,772,700	411.4	0.2%	-2.3%	-3.8%	-1.0%	2.6%	46.9%	126.4%
	Ladner	\$1,396,100	340.0	-1.7%	-4.3%	-1.0%	1.2%	1.6%	50.0%	109.9%
	Maple Ridge	\$1,286,800	376.6	0.3%	-0.1%	-1.2%	3.8%	-2.5%	55.6%	167.7%
	New Westminister	\$1,579,700	388.0	0.6%	-1.3%	-0.9%	6.1%	7.8%	50.4%	113.2%
	North Vancouver	\$2,130,900	334.5	-0.8%	-3.6%	-7.6%	-2.5%	0.6%	30.0%	87.1%
	Pitt Meadows	\$1,301,100	389.9	-2.6%	3.0%	-0.1%	5.6%	-3.7%	53.7%	158.0%
	Port Coquitlam	\$1,379,500	390.5	-0.9%	-2.8%	-3.1%	0.6%	2.3%	50.7%	146.1%
	Port Moody	\$2,095,800	401.0	0.5%	-5.5%	-4.0%	0.8%	9.3%	52.2%	130.6%
	Richmond	\$2,140,900	434.2	1.0%	-1.3%	-2.6%	1.4%	4.6%	35.8%	90.2%
	Squamish	\$1,518,500	378.8	-0.1%	-0.4%	-1.9%	0.5%	-3.1%	31.8%	161.4%
	Sunshine Coast	\$897,000	312.0	-3.9%	1.0%	-3.8%	8.7%	0.5%	53.5%	148.6%
	Tsawwassen	\$1,594,600	352.0	-0.4%	-1.2%	0.3%	1.6%	2.3%	45.2%	106.6%
	Vancouver East	\$1,855,700	413.9	-0.4%	0.4%	-2.0%	0.3%	5.2%	34.3%	92.4%
	Vancouver West	\$3,374,900	351.7	-0.3%	-2.8%	-5.2%	-2.5%	0.1%	18.5%	39.6%
West Vancouver	\$3,308,300	308.3	2.5%	1.2%	-0.8%	6.1%	0.0%	27.3%	49.5%	
Whistler	\$2,398,500	311.7	0.6%	-0.7%	-4.8%	1.0%	-2.9%	32.2%	127.7%	

HOW TO READ THE TABLE:

- **Benchmark Price:** Estimated sale price of a benchmark property. Benchmarks represent a typical property within each market.
- **Price Index:** Index numbers estimate the percentage change in price on typical and constant quality properties over time. All figures are based on past sales.
- **x Month/Year Change %:** Percentage change of index over a period of x month(s)/year(s)

In January 2005, the indexes are set to 100.

Townhome properties are similar to Attached properties, a category that was used in the previous MLSLink HPI, but do not include duplexes.

The above info is deemed reliable, but is not guaranteed. All dollar amounts in CDN.

Property Type	Area	Benchmark Price	Price Index	1 Month Change %	3 Month Change %	6 Month Change %	1 Year Change %	3 Year Change %	5 Year Change %	10 Year Change %
Townhouse	Lower Mainland	\$976,400	372.8	-0.5%	0.6%	-2.2%	2.4%	7.8%	45.8%	132.4%
	Greater Vancouver	\$1,114,600	389.3	-0.3%	1.4%	-2.1%	3.4%	10.0%	41.9%	129.5%
	Burnaby East	\$881,300	383.8	1.0%	-2.0%	-5.1%	-0.3%	12.3%	39.1%	116.2%
	Burnaby North	\$912,700	371.6	-2.8%	-4.0%	-4.5%	0.4%	12.9%	34.4%	118.5%
	Burnaby South	\$1,056,300	387.2	0.1%	3.4%	-4.1%	-2.2%	13.3%	35.2%	116.2%
	Coquitlam	\$1,071,600	419.2	1.4%	0.0%	-1.2%	4.5%	9.0%	46.4%	155.1%
	Ladner	\$1,035,800	411.2	2.7%	1.5%	2.3%	10.0%	15.7%	48.6%	149.7%
	Maple Ridge	\$777,100	391.1	0.3%	-1.2%	-1.9%	3.8%	3.7%	49.3%	183.0%
	New Westminster	\$956,600	410.0	1.6%	0.7%	0.5%	5.6%	14.0%	48.9%	122.9%
	North Vancouver	\$1,311,700	358.9	-2.8%	3.3%	-5.6%	-0.8%	6.8%	43.2%	128.5%
	Pitt Meadows	\$813,000	398.5	0.2%	-1.3%	-2.5%	2.5%	0.1%	47.2%	168.4%
	Port Coquitlam	\$940,700	379.2	0.5%	4.5%	-1.0%	3.4%	7.4%	49.8%	148.7%
	Port Moody	\$1,030,700	398.3	0.4%	-2.8%	-1.7%	0.7%	7.1%	46.1%	150.7%
	Richmond	\$1,134,800	406.9	0.0%	-1.3%	-2.4%	3.0%	14.0%	45.6%	126.9%
	Squamish	\$1,030,800	388.1	-3.1%	-0.9%	-3.6%	0.3%	9.2%	44.4%	174.9%
	Sunshine Coast	\$747,100	349.6	-3.5%	-1.3%	-4.3%	-0.2%	10.6%	50.2%	157.6%
	Tsawwassen	\$1,008,200	295.7	1.2%	1.1%	0.6%	6.4%	7.9%	24.0%	66.5%
	Vancouver East	\$1,147,000	378.2	2.6%	4.6%	-0.1%	7.2%	7.7%	32.5%	111.9%
	Vancouver West	\$1,527,200	360.3	0.5%	7.8%	2.4%	10.0%	8.3%	28.6%	99.5%
Whistler	\$1,662,100	407.8	-4.5%	-0.1%	-4.9%	-0.2%	11.2%	52.2%	204.8%	
Apartment	Lower Mainland	\$696,900	349.7	-0.4%	-1.6%	-3.0%	0.0%	7.4%	27.5%	103.0%
	Greater Vancouver	\$749,900	347.0	-0.4%	-1.6%	-3.0%	-0.1%	7.5%	23.6%	100.9%
	Burnaby East	\$788,000	333.8	-0.6%	0.2%	-1.8%	0.2%	7.5%	25.3%	97.7%
	Burnaby North	\$734,900	359.4	-1.0%	-1.1%	-3.2%	-1.4%	6.0%	28.9%	110.1%
	Burnaby South	\$837,000	383.4	1.1%	0.6%	-0.8%	-0.6%	8.6%	23.3%	106.0%
	Coquitlam	\$728,700	408.0	0.0%	0.3%	-2.4%	1.7%	9.3%	33.2%	145.8%
	Ladner	\$642,800	326.5	-0.9%	2.7%	-8.4%	-9.9%	5.1%	29.6%	112.6%
	Maple Ridge	\$530,200	379.0	0.9%	0.9%	-0.9%	0.4%	9.5%	44.7%	163.7%
	New Westminster	\$650,200	397.7	1.2%	-2.5%	-0.3%	0.5%	12.0%	31.0%	128.8%
	North Vancouver	\$796,100	323.2	0.0%	-0.2%	-3.5%	0.6%	8.9%	27.5%	111.0%
	Pitt Meadows	\$604,300	418.2	-0.1%	0.6%	-0.6%	0.4%	9.7%	39.8%	166.4%
	Port Coquitlam	\$631,700	435.7	0.8%	-1.4%	-2.4%	4.1%	12.1%	42.2%	173.5%
	Port Moody	\$752,100	411.9	-0.4%	-0.8%	-1.1%	3.7%	11.3%	39.8%	146.2%
	Richmond	\$724,400	402.2	-1.0%	-1.8%	-3.0%	-1.4%	14.2%	31.0%	126.6%
	Squamish	\$563,800	333.2	-3.9%	-10.2%	-5.7%	-15.3%	-1.3%	23.4%	155.5%
	Sunshine Coast	\$467,300	282.4	-4.6%	-11.2%	-8.0%	-18.6%	-10.2%	9.9%	101.1%
	Tsawwassen	\$639,700	302.7	-1.0%	2.6%	-9.4%	-6.1%	8.6%	22.2%	102.7%
	Vancouver East	\$690,200	400.6	-0.3%	-2.6%	-3.0%	0.5%	4.3%	19.1%	102.7%
	Vancouver West	\$819,400	316.7	-0.8%	-2.3%	-3.7%	1.0%	2.5%	10.7%	78.7%
West Vancouver	\$1,226,100	236.5	1.2%	-1.5%	-9.2%	-4.3%	3.6%	14.2%	67.6%	
Whistler	\$614,300	264.9	-5.4%	-11.9%	-9.2%	-18.6%	-3.2%	26.2%	153.3%	

HOW TO READ THE TABLE:

- **Benchmark Price:** Estimated sale price of a benchmark property. Benchmarks represent a typical property within each market.
- **Price Index:** Index numbers estimate the percentage change in price on typical and constant quality properties over time. All figures are based on past sales.
- **x Month/Year Change %:** Percentage change of index over a period of x month(s)/year(s)

In January 2005, the indexes are set to 100.

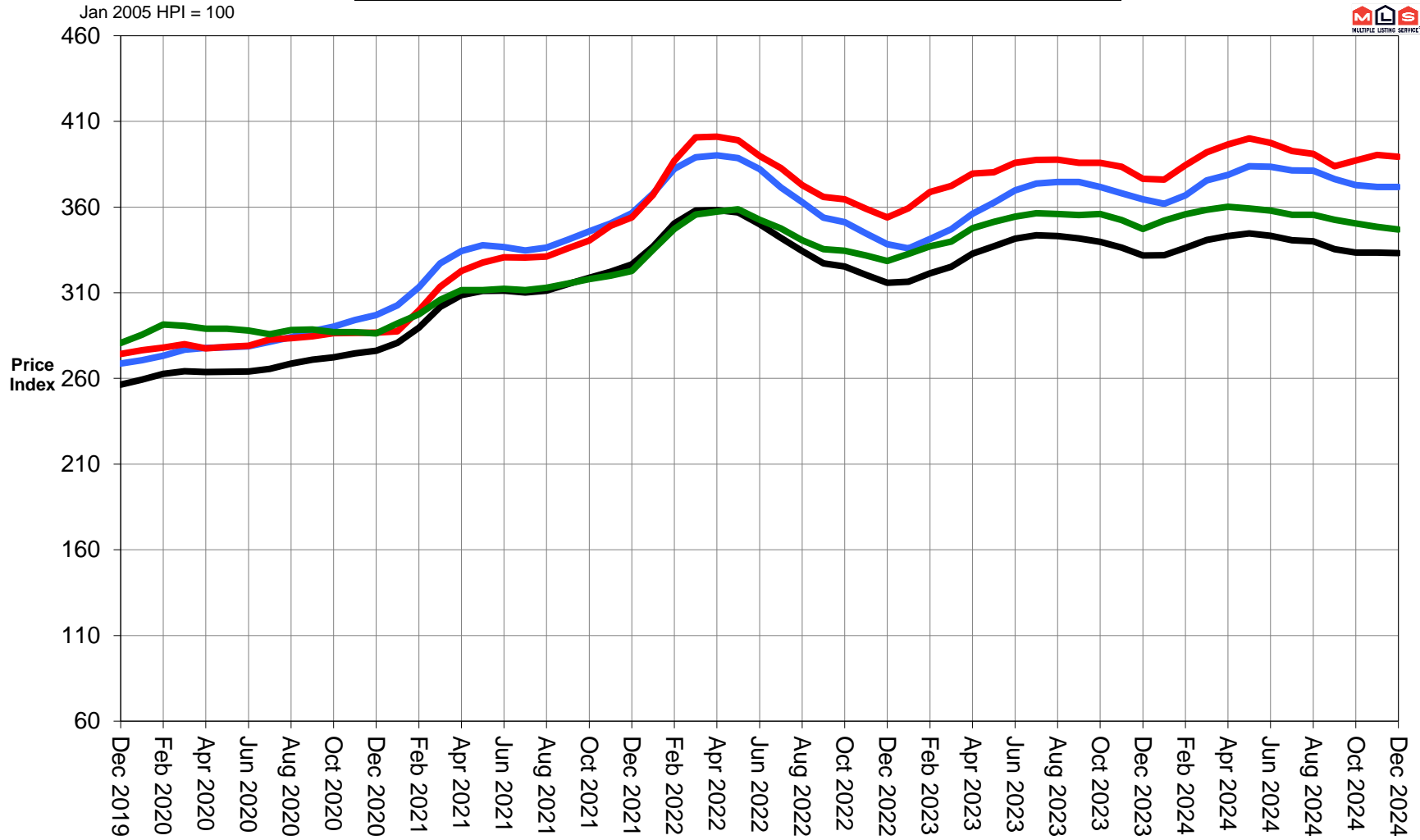
Townhome properties are similar to attached properties, a category that was used in the previous MLSLink HPI, but do not include duplexes.

Lower Mainland includes areas serviced by both Greater Vancouver Realtors & Fraser Valley Real Estate Board.

The above info is deemed reliable, but is not guaranteed. All dollar amounts in CDN.

Greater Vancouver 5 Year Trend

Residential Detached Townhouse Apartment



MLS® SALES Facts



**December
2024**

		Bowen Island	Burnaby	Coquitlam	Delta - South	Islands - Gulf	Maple Ridge/Pitt Meadows	New Westminster	North Vancouver	Port Coquitlam	Port Moody/Belcarra	Richmond	Squamish	Sunshine Coast	Vancouver East	Vancouver West	West Vancouver/Howe Sound	Whistler/Pemberton	TOTALS
December 2024	Number of Sales	Detached: 5 Attached: 0 Apartment: 0	45	38	18	4	59	13	46	20	8	54	10	35	57	47	26	9	494
	Median Selling Price	Detached: n/a Attached: n/a Apartment: n/a	\$2,120,000	\$1,741,250	n/a	n/a	\$1,315,000	n/a	\$2,107,500	\$1,450,900	n/a	\$2,070,000	n/a	\$1,013,000	\$1,880,000	\$3,514,000	\$2,992,350	n/a	n/a
			\$718,000	\$680,000	n/a	n/a	\$540,000	\$660,000	\$836,500	n/a	n/a	\$670,000	n/a	n/a	\$700,000	\$860,000	n/a	n/a	n/a
November 2024	Number of Sales	Detached: 4 Attached: 0 Apartment: 0	57	47	32	4	77	11	55	25	19	65	18	31	76	65	31	9	626
	Median Selling Price	Detached: n/a Attached: n/a Apartment: n/a	\$2,062,500	\$1,736,100	\$1,435,325	n/a	\$1,285,000	n/a	\$2,103,888	\$1,310,000	n/a	\$2,020,000	n/a	\$975,000	\$1,880,000	\$3,330,000	\$3,350,000	n/a	n/a
			\$699,000	\$665,000	n/a	n/a	\$496,950	\$612,500	\$778,000	\$568,725	\$758,500	\$660,000	n/a	n/a	\$688,950	\$839,000	n/a	\$647,500	n/a
December 2023	Number of Sales	Detached: 0 Attached: 0 Apartment: 0	31	31	17	1	63	10	30	7	6	42	8	22	48	35	23	2	376
	Median Selling Price	Detached: n/a Attached: n/a Apartment: n/a	\$1,890,000	\$1,785,000	n/a	n/a	\$1,194,000	n/a	\$2,075,000	n/a	n/a	\$1,912,500	n/a	\$859,500	\$1,809,000	\$3,950,000	\$2,972,500	n/a	n/a
			\$712,000	\$668,000	n/a	n/a	\$523,250	\$610,000	\$676,944	\$555,000	n/a	\$698,000	n/a	n/a	\$610,250	\$825,000	n/a	n/a	n/a
Jan. - Dec. 2024 <i>Year-to-date</i>	Number of Sales	Detached: 51 Attached: 0 Apartment: 0	629	607	363	45	976	169	712	255	133	783	173	462	882	793	401	108	7,542
	Median Selling Price	Detached: \$1,340,000 Attached: n/a Apartment: n/a	\$2,156,000	\$1,775,000	\$1,499,000	\$800,000	\$1,299,950	\$1,575,000	\$2,200,000	\$1,434,000	\$1,910,000	\$2,060,000	\$1,565,000	\$950,000	\$1,950,000	\$3,500,000	\$2,962,500	\$2,178,750	n/a
			\$720,000	\$680,000	\$654,250	n/a	\$535,000	\$629,000	\$800,000	\$594,900	\$760,000	\$689,350	\$641,950	\$518,500	\$695,000	\$850,000	\$1,220,000	\$561,900	n/a
Jan. - Dec. 2023 <i>Year-to-date</i>	Number of Sales	Detached: 37 Attached: 0 Apartment: 0	628	641	396	62	926	200	693	249	162	817	165	383	901	818	368	118	7,564
	Median Selling Price	Detached: \$1,440,000 Attached: n/a Apartment: n/a	\$1,950,000	\$1,750,000	\$1,475,000	\$825,500	\$1,250,000	\$1,522,500	\$2,100,000	\$1,370,000	\$1,887,500	\$1,988,444	\$1,477,500	\$944,500	\$1,914,000	\$3,515,000	\$3,075,000	\$2,315,000	n/a
			\$726,000	\$676,250	\$639,500	n/a	\$522,000	\$615,000	\$785,000	\$599,950	\$720,000	\$685,000	\$630,000	\$485,000	\$678,000	\$845,000	\$1,246,000	\$650,000	n/a

Note: Median Selling Prices are not reported for areas with less than 20 sales or for the Gulf Islands



MLS® LISTINGS Facts



**December
2024**

		Bowen Island	Burnaby	Coquitlam	Delta - South	Islands - Gulf	Maple Ridge/Pitt Meadows	New Westminster	North Vancouver	Port Coquitlam	Port Moody/Belcarra	Richmond	Squamish	Sunshine Coast	Vancouver East	Vancouver West	West Vancouver/Howe Sound	Whistler/Pemberton	TOTALS
December 2024	Number of Listings	Detached: 2 Attached: 0 Apartment: 0	47 26 171	26 30 97	21 11 7	2 0 0	54 18 27	6 7 53	26 22 53	19 7 23	9 6 11	48 53 91	7 7 15	30 4 3	57 55 67	48 43 235	50 3 22	13 20 24	465 312 899
	% Sales to Listings	Detached: 250% Attached: n/a Apartment: n/a	96% 181% 91%	146% 97% 63%	86% 91% 100%	200% n/a n/a	109% 267% 122%	217% 143% 138%	177% 145% 113%	105% 243% 61%	89% 117% 127%	113% 109% 133%	143% 114% 73%	117% 75% 33%	100% 87% 137%	98% 93% 93%	52% 67% 50%	69% 60% 79%	n/a
	November 2024	Number of Listings	Detached: 5 Attached: 0 Apartment: 0	81 62 339	89 56 168	34 24 28	5 0 0	137 62 52	19 13 140	83 43 131	39 27 43	24 14 38	108 95 263	22 20 23	41 6 15	126 144 205	125 109 471	78 13 28	23 18 33
	% Sales to Listings	Detached: 80% Attached: n/a Apartment: n/a	70% 87% 60%	53% 46% 58%	94% 67% 39%	80% n/a n/a	56% 79% 38%	58% 108% 49%	66% 67% 68%	64% 81% 67%	79% 93% 79%	60% 49% 45%	82% 65% 70%	76% 50% 40%	60% 52% 57%	52% 63% 53%	40% 23% 39%	39% 100% 67%	n/a
December 2023	Number of Listings	Detached: 2 Attached: 0 Apartment: 0	33 15 116	29 22 35	16 12 4	5 0 0	54 20 42	14 0 25	24 16 57	17 6 16	8 10 13	50 25 82	6 7 10	28 4 4	36 48 64	37 24 185	37 1 14	15 13 23	411 223 690
	% Sales to Listings	Detached: 0% Attached: n/a Apartment: n/a	94% 160% 115%	107% 132% 169%	106% 67% 200%	20% n/a n/a	117% 125% 67%	71% n/a 132%	125% 138% 95%	41% 100% 131%	75% 70% 92%	84% 116% 117%	133% 114% 50%	79% 75% 50%	133% 79% 97%	95% 96% 96%	62% 200% 107%	13% 85% 61%	n/a
	Jan. - Dec. 2024	Number of Listings	Detached: 138 Attached: 1 Apartment: 0	1,365 971 5,045	1,550 991 2,401	738 357 368	120 7 2	2,319 1,011 978	402 259 1,614	1,530 872 2,164	631 374 625	395 278 543	1,886 1,322 3,195	354 309 270	1,198 125 110	2,103 1,965 2,862	2,118 1,653 8,302	1,580 145 520	294 355 454
Year-to-date*	% Sales to Listings	Detached: 37% Attached: 0% Apartment: n/a	46% 53% 47%	39% 46% 48%	49% 55% 50%	38% 29% 50%	42% 60% 45%	42% 47% 52%	47% 48% 49%	40% 60% 56%	34% 63% 57%	42% 48% 48%	49% 61% 49%	39% 48% 45%	42% 42% 47%	37% 37% 40%	25% 30% 38%	37% 50% 63%	n/a
Jan. - Dec. 2023	Number of Listings	Detached: 105 Attached: 2 Apartment: 0	1,198 919 3,913	1,198 870 1,853	747 296 268	122 5 3	1,986 770 832	378 187 1,161	1,324 653 1,766	476 250 535	333 247 557	1,756 1,121 2,874	382 261 207	1,069 122 108	1,782 1,394 2,385	1,834 1,213 7,321	1,423 122 428	296 310 368	16,409 8,742 24,579
	% Sales to Listings	Detached: 35% Attached: 0% Apartment: n/a	52% 62% 60%	54% 54% 60%	53% 58% 67%	51% 0% 67%	47% 64% 55%	53% 57% 64%	52% 59% 61%	52% 68% 62%	49% 67% 70%	47% 58% 61%	43% 61% 54%	36% 57% 54%	51% 46% 54%	45% 42% 46%	26% 37% 51%	40% 60% 70%	n/a
	Year-to-date*																		

* Year-to-date listings represent a cumulative total of listings rather than total active listings.



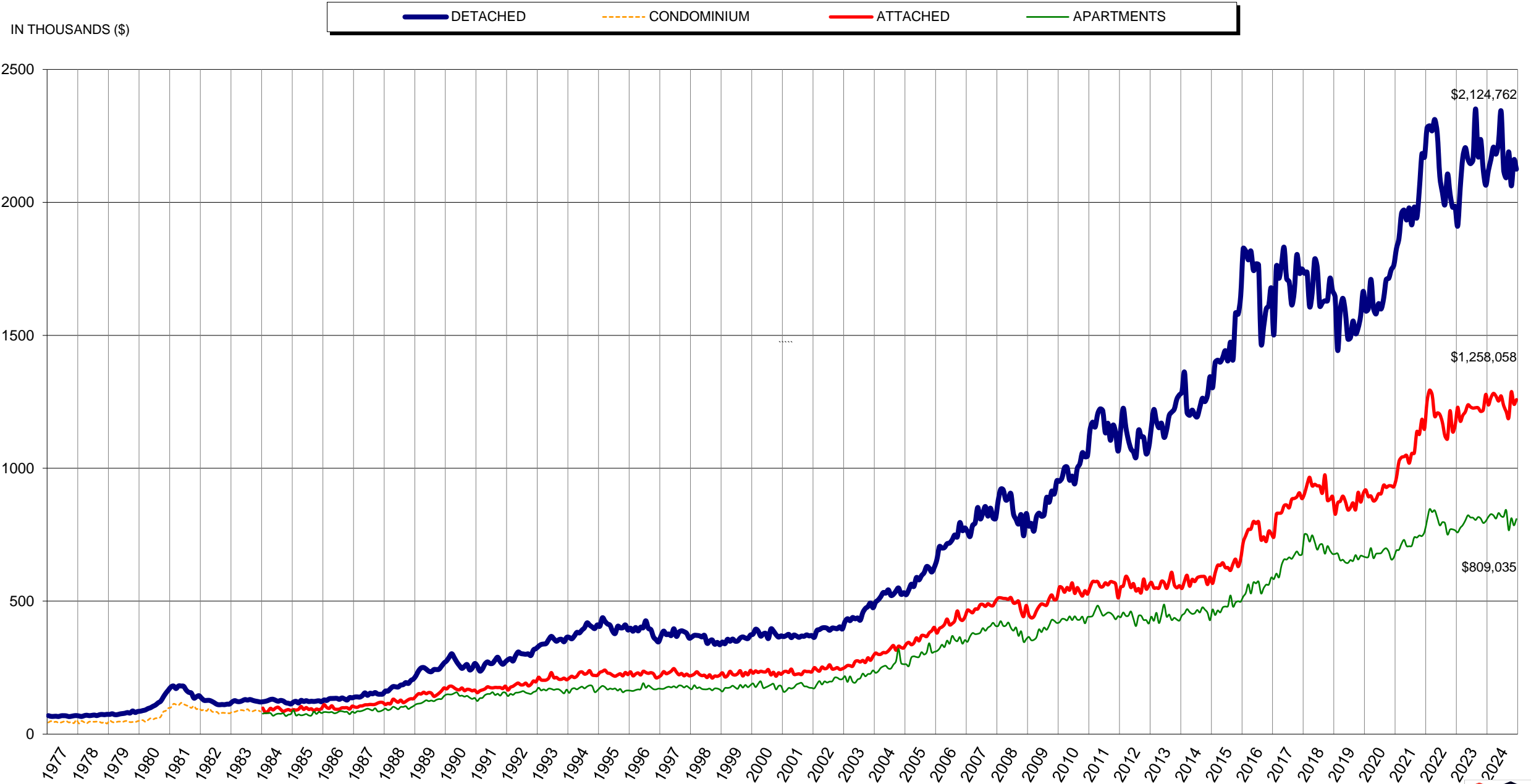
Listing & Sales Activity Summary

	<u>Listings</u>				<u>Sales</u>						
	1 Dec 2023	2 Nov 2024	3 Dec 2024	Col. 2 & 3 Percentage Variance	5 Dec 2023	6 Nov 2024	7 Dec 2024	Col. 6 & 7 Percentage Variance	9 Oct 2023 - Dec 2023	10 Oct 2024 - Dec 2024	Col. 9 & 10 Percentage Variance
BOWEN ISLAND				%				%			%
DETACHED	2	5	2	-60.0	0	4	5	25.0	6	14	133.3
ATTACHED	0	0	0	0.0	0	0	0	0.0	0	0	0.0
APARTMENTS	0	0	0	0.0	0	0	0	0.0	0	0	0.0
BURNABY				%				%			%
DETACHED	33	81	47	-42.0	31	57	45	-21.1	123	167	35.8
ATTACHED	15	62	26	-58.1	24	54	47	-13.0	107	154	43.9
APARTMENTS	116	339	171	-49.6	133	203	155	-23.6	450	598	32.9
COQUITLAM											
DETACHED	29	89	26	-70.8	31	47	38	-19.1	115	141	22.6
ATTACHED	22	56	30	-46.4	29	26	29	11.5	110	103	-6.4
APARTMENTS	35	168	97	-42.3	59	98	61	-37.8	220	299	35.9
DELTA											
DETACHED	16	34	21	-38.2	17	32	18	-43.8	68	84	23.5
ATTACHED	12	24	11	-54.2	8	16	10	-37.5	28	39	39.3
APARTMENTS	4	28	7	-75.0	8	11	7	-36.4	29	39	34.5
ISLANDS - GULF											
DETACHED	5	5	2	-60.0	1	4	4	0.0	13	10	-23.1
ATTACHED	0	0	0	0.0	0	0	0	0.0	0	0	0.0
APARTMENTS	0	0	0	0.0	0	0	0	0.0	0	1	100.0
MAPLE RIDGE/PITT MEADOWS											
DETACHED	54	137	54	-60.6	63	77	59	-23.4	197	214	8.6
ATTACHED	20	62	18	-71.0	25	49	48	-2.0	80	147	83.8
APARTMENTS	42	52	27	-48.1	28	20	33	65.0	90	100	11.1
NEW WESTMINSTER											
DETACHED	14	19	6	-68.4	10	11	13	18.2	39	43	10.3
ATTACHED	0	13	7	-46.2	3	14	10	-28.6	14	36	157.1
APARTMENTS	25	140	53	-62.1	33	68	73	7.4	139	230	65.5
NORTH VANCOUVER											
DETACHED	24	83	26	-68.7	30	55	46	-16.4	144	175	21.5
ATTACHED	16	43	22	-48.8	22	29	32	10.3	92	106	15.2
APARTMENTS	57	131	53	-59.5	54	89	60	-32.6	218	254	16.5
PORT COQUITLAM											
DETACHED	17	39	19	-51.3	7	25	20	-20.0	35	71	102.9
ATTACHED	6	27	7	-74.1	6	22	17	-22.7	36	64	77.8
APARTMENTS	16	43	23	-46.5	21	29	14	-51.7	72	68	-5.6
PORT MOODY/BELCARRA											
DETACHED	8	24	9	-62.5	6	19	8	-57.9	31	39	25.8
ATTACHED	10	14	6	-57.1	7	13	7	-46.2	24	38	58.3
APARTMENTS	13	38	11	-71.1	12	30	14	-53.3	60	80	33.3
RICHMOND											
DETACHED	50	108	48	-55.6	42	65	54	-16.9	147	214	45.6
ATTACHED	25	95	53	-44.2	29	47	58	23.4	95	162	70.5
APARTMENTS	82	263	91	-65.4	96	119	121	1.7	317	378	19.2
SQUAMISH											
DETACHED	6	22	7	-68.2	8	18	10	-44.4	30	46	53.3
ATTACHED	7	20	7	-65.0	8	13	8	-38.5	37	38	2.7
APARTMENTS	10	23	15	-34.8	5	16	11	-31.3	21	46	119.0
SUNSHINE COAST											
DETACHED	28	41	30	-26.8	22	31	35	12.9	72	113	56.9
ATTACHED	4	6	4	-33.3	3	3	3	0.0	10	13	30.0
APARTMENTS	4	15	3	-80.0	2	6	1	-83.3	10	15	50.0
VANCOUVER EAST											
DETACHED	36	126	57	-54.8	48	76	57	-25.0	185	213	15.1
ATTACHED	48	144	55	-61.8	38	75	48	-36.0	128	197	53.9
APARTMENTS	64	205	67	-67.3	62	117	92	-21.4	239	337	41.0
VANCOUVER WEST											
DETACHED	37	125	48	-61.6	35	65	47	-27.7	161	181	12.4
ATTACHED	24	109	43	-60.6	23	69	40	-42.0	107	170	58.9
APARTMENTS	185	471	235	-50.1	177	250	219	-12.4	631	810	28.4
WEST VANCOUVER/HOWE SOUND											
DETACHED	37	78	50	-35.9	23	31	26	-16.1	83	87	4.8
ATTACHED	1	13	3	-76.9	2	3	2	-33.3	7	13	85.7
APARTMENTS	14	28	22	-21.4	15	11	11	0.0	51	41	-19.6
WHISTLER/PEMBERTON											
DETACHED	15	23	13	-43.5	2	9	9	0.0	26	31	19.2
ATTACHED	13	18	20	11.1	11	18	12	-33.3	35	43	22.9
APARTMENTS	23	33	24	-27.3	14	22	19	-13.6	66	77	16.7
GRAND TOTALS											
DETACHED	411	1039	465	-55.2	376	626	494	-21.1	1475	1843	24.9
ATTACHED	223	706	312	-55.8	238	451	371	-17.7	910	1323	45.4
APARTMENTS	690	1977	899	-54.5	719	1089	891	-18.2	2613	3373	29.1



GREATER VANCOUVER REALTORS®

Residential Average Sale Prices - January 1977 to December 2024



NOTE: From 1977 - 1984 condominium averages were not separated into attached & apartment.

